



RESEARCH ARTICLE

# Anatomical variation in Walnut (*Juglans regia* L.) populations from Dir and Swat Districts, Pakistan: Implications for plant taxonomy and adaptation to climate change

Mohammad Kamil<sup>1</sup>, Ikramullah Khan<sup>1</sup>, Hamad Ur Rehman<sup>2</sup>, Rafi Ullah<sup>3</sup>, Fazal Ullah<sup>4</sup>, Muhammad Irfan<sup>5\*</sup>, Mursaleen<sup>6</sup>, Rimsha Zainab<sup>7</sup> & Mohammad Romman<sup>8</sup>

<sup>1</sup>Department of Botany, Abdul Wali Khan University, Mardan 23 200, Pakistan

<sup>2</sup>Department of Environment Science and Engineering, China University of Geosciences, Wuhan 430 074, China

<sup>3</sup>Center of Excellence, Al Majal Al Arabi Group, Green Riyadh, RCRC, Riyadh 11 663, Saudi Arabia

<sup>4</sup>Department of Botany, University of Swabi, Swabi 23 561, Pakistan

<sup>5</sup>Artscape Safari Group, Green Riyadh, Royal Commission for Riyadh City, Riyadh 13 244, Saudi Arabia

<sup>6</sup>Department of Botany, Government Degree College Bakhshali, Mardan 23 200, Pakistan

<sup>7</sup>Department of Botany, Shaheed Benazir Bhutto Women University, Peshawar 18 050, Pakistan

<sup>8</sup>Department of Botany, University of Chitral, Chitral 17 200, Pakistan

\*Correspondence email - [M.irfan@safari.com.sa](mailto:M.irfan@safari.com.sa)

Received: 16 November 2025; Accepted: 16 March 2026; Available online: Version 1.0: 22 April 2026; Version 2.0: 29 April 2026

**Cite this article:** Mohammad K, Ikramullah K, Hamad UR, Rafi U, Fazal U, Muhammad I, Mursaleen, Rimsha Z, Mohammad R. Anatomical variation in Walnut (*Juglans regia* L.) populations from Dir and Swat Districts, Pakistan: Implications for plant taxonomy and adaptation to climate change. Plant Science Today. 2026; 13(2): 1-12. <https://doi.org/10.14719/pst.12768>

## Abstract

In the fight against climate change, every ring in anatomy tells a story and every leaf holds a secret. Similarly, walnut populations in Pakistan's Dir and Swat districts face varying climatic conditions that affect their anatomy. However, the current study aims to explore the anatomical variations in walnut leaves and nuts to understand climate-driven adaptations. In the assessed study, the 44 sites examined were analyzed using scanning electron microscopy (SEM) to analyse epidermal cells, pith cells and vascular tissues. Walnut populations showed clear anatomical variations between districts. In the results, the Swat-selected specimens had larger epidermal cells (31.55–56.12 µm), phloem and pith cells, whereas the Dir specimens had larger xylem and palisade cells. Although high-altitude walnuts produced thinner shells and bigger cotyledons, the low-altitude trees had thicker shells. In short, these traits decreased with rising temperature and increased with altitude and light intensity. These findings have implications for plant taxonomy and conservation, suggesting anatomical variations can inform adaptation strategies and breeding programs in mountainous areas.

**Keywords:** anatomical variation; climate change; Dir and Swat districts; Pakistan; plant taxonomy; walnut

## Introduction

*Juglans regia* L., commonly known as walnut, is a deciduous perennial plant that belongs to Juglandaceae. Walnuts are known for their nutritional values and high market prices. The walnut leaves are about 25–40 cm long and are odd-pinnate, with 5–9 leaflets arranged alternately. The walnut root system is characterized by a deep taproot that develops early (1). It typically grows in pure stands or as individual mature trees rather than in mixed woodlands. The species also requires a long growing season and usually thrives in warm, sheltered locations (1). Walnuts thrive in deep, rich soil with a pH between 6 and 7.5 (2). Walnut is a widely distributed medicinal plant that has significant medical properties for the treatment of many diseases, such as skin disorders, stomach pain, diarrhoea, arthritis, asthma, fever and some endocrine diseases like thyroid dysfunctions, diabetes mellitus, cancer and other diseases (3). Nuts, especially walnuts, are a nutritional powerhouse and offer numerous health benefits (4). World-wide, walnut is valuable crop due to rich in nutrients (5). The food and Agriculture Organisation

(FAO) included walnut in the priority plant group (6). In recent years, the by-products of walnuts, such as husk and shell, contain 70 % of the weight of the fruit (7), used for bioethanol production (8, 9), pyrolytic acid extraction (10), activated carbon and charcoal (11) and nutty carbon used for battery anodes (12). Besides, skin (13), bark (14), root (15) and leaves (16) can be used in various industries as low-cost material (17). Previously, (6) reported that walnut diversity has increased over the years in their native regions, particularly their kernel colour, shell colour, nut shape, size and thickness. Walnuts are indeed cultivated commercially in various regions around the world, including East Asia, North Africa, Southern Europe, South America and the USA. The global production of walnuts has increased significantly in recent years, with Asian countries leading the growth.

In this modern time, the practice of scanning electron microscopic study delivers the chance to explore consistent structures to determine plant taxa and information about the anatomical, ecological and geographical significance of diverse groups of plants (18, 19). The nut's surface, exine and shape are

valuable characteristics for identifying and classifying plant species within a family. The variation between species has been revealed using scanning electron microscopy (SEM), which provides evidence to support and strengthen the taxonomy of the genus (20). Certain differences in cell structures cannot be detected by SEM (21). Various cell studies depend on the methodology used in the preparation of slides and differences in the individual methods (22).

Different climate conditions, like drought, can significantly impact plant anatomy, reducing tree diameter in regions like mid and Southern Europe (23). Mild winters boost walnut germination, showing that warmer winters can impact their adaptability (24). Low air humidity alone can reduce the productivity and biomass of European beech trees (25). In-plant species distribution environment plays an important role in the entire globe (26). Mean annual precipitation also had an excessive influence on the woody fruit plant species distribution but mean annual temperature, on the other hand, was recognised as a great climatic driver for all herb species distribution and growth (27). It is also described that an increase in the humidity of the air results in a reduced growing level, as well as accumulation of biomass of the sapling of *Betula pendula* (28). Walnut yield is closely linked to its lateral bearing habit. Environmental factors like light, temperature, drought and altitude affect leaf structure and trends show plants in low-temperature

zones have thicker mesophyll tissue, epidermal thickness, smaller leaf area and thicker leaves (29). Plants in water-scarce regions often have small cell volume, increased palisade layers, decreased spongy coatings and smaller intercellular spaces (30). Anatomical studies for species from this family are still incipient (31–34) evidencing the need to expand knowledge about anatomy, searching for characters that contribute to the identification and separation of species of this family. Plant morphology plays a key role in understanding early angiosperm evolution and classification (35).

The anatomical features of plant parts, like leaves and stems, provide important extra information about their external appearance, especially when there are only vegetative specimens for analysis (36, 37). Climate change affecting tree species distributions is a good example of the wide magnitude of global changes (38, 39). Therefore, the study aimed to examine how different climatic factors influence the anatomical structure of walnut leaves and nuts in northern Pakistan.

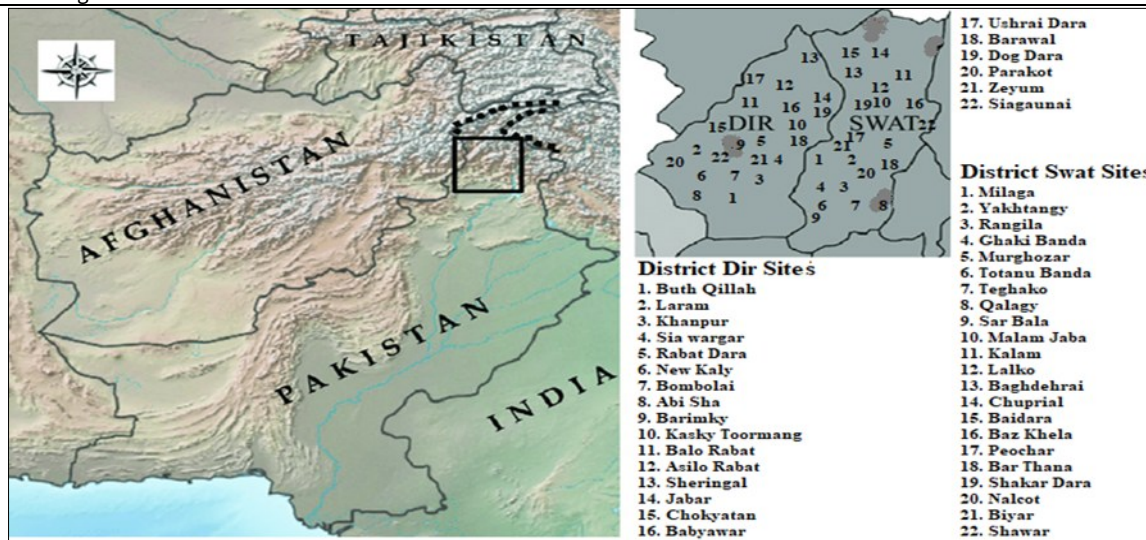
**Methodology**

**Study sites**

The plant specimens (leaves and nuts) were collected for anatomical variation from forty-four locations of Dir and Swat districts (Table 1). Dir is situated at 71°50' E and 35°12' N whereas Swat district is

**Table 1.** Sampling site and their Latitude (Northern) and Longitude (Eastern) of Dir and Swat

S. No	District Dir sites	Latitude (Northern)	Longitude (Eastern)	S.No	District Swat sites	Latitude (Northern)	Longitude (Eastern)
1	Buth Qillah	34° 80'12"	72° 15'75"	1	Milaga	34°41' 47"	72° 47'34"
2	Laram	34° 47' 39"	71° 56'40"	2	Yakhtangy	34°42' 47"	72° 33'43"
3	Khanpur	34° 36' 24"	72° 4'32"	3	Rangila	34°80'28"	71° 79'33"
4	Siawargar	34° 47' 12"	72° 57'47"	4	Ghaki Banda	34°78' 47"	71° 28'47"
5	Rabat Dara	34° 43' 47"	72° 67'32"	5	Murghozar	34° 66'78"	72° 34'31"
6	New Kaly	34° 51' 47"	71°87'47"	6	Totanu Banda	34°59' 37"	72° 28'74"
7	Bombolai	34° 38' 24"	71° 34'74"	7	Tegako	34°50' 43"	72° 26'73"
8	Abi Shah	34° 40' 32"	71° 35'47"	8	Qalagy	34°87' 30"	72° 17'42"
9	Barimky	34° 43' 32"	72° 67'47"	9	Sar bala	34°89' 43"	72° 36'72"
10	Kasky Toormang	34° 54'55"	72° 1'3.2"	10	Malam Jaba	34°48' 35"	72° 23'58"
11	Balo Rabat	34° 52' 53"	71° 58'26"	11	Kalam	35°28' 41"	72° 35'18"
12	Asilo Rabat	34° 52' 88"	71° 58'45"	12	Lalkoo	35° 6'44"	72° 23'50"
13	Sheringal	35° 15' 12"	72° 3'21"	13	Baghderai	35° 5' 34"	72° 12'35"
14	Jabar	35°8' 34"	72° 2'10"	14	Chuprial	34° 58'56"	72° 21'39"
15	Chokyatan	35° 12' 20"	71° 52'32"	15	Baidara	35° 2' 55"	72° 18'1"
16	Babyawar	35° 07' 39"	71° 56'21"	16	Bazkhela	34°55' 47"	72° 47'46"
17	Usherai Dara	34° 22' 13"	71° 33'15"	17	Peochar	34°13' 48"	72° 18'34"
18	Barawal	35° 05'11"	71°4 5'38"	18	Bar Thana	34°15' 18"	71° 77'40"
19	Dog Dara	35° 16' 60"	72°1 5'30"	19	Shakar Dara	34° 52'19"	72°24'34"
20	Parakot	35° 28' 34"	72° 45'16"	20	Nalcot	35° 3'53"	72° 18'21"
21	Zeyam	34° 70' 12"	72° 24'78"	21	Bihar	35° 3' 19"	72° 32'4"
22	Siagaonai	34° 20' 18"	71° 30'35"	22	Shawar	34°46' 49"	72° 41'17"



**Fig. 1.** Location of the sites sample across the districts of Dir and District Swat, Pakistan.

situated at 72° 10' 60.00" E and 35° 22' 59.99" N in Malakand Division, Pakistan (Fig. 1). Climatic data on atmospheric temperature and precipitation were collected from the Pakistan Meteorological Department. However, soil temperature was measured with a soil thermometer and light intensity was measured with a light sensor. There is significant variation in the elevations of the sampling sites, ranging from 1062 to 2590.8 m in the Dir district and from 778 to 2804 m in the Swat district. Mean growing season minimum temperature of various sites ranges from 4.0 to 9.8 °C in the Dir district, while in the Swat district, it ranges from 4.2 to 13.7 °C and maximum temperature of various sites ranges from 24.1 to 33.9 °C in the Dir district, while in the Swat district, it ranges from 23.2 to 33.7 °C.

### Field sampling

A total of 44 mature walnut plants were labelled in 44 different locations in Dir and Swat in January 2018. Those walnut trees had occurred naturally in the hilly areas of both Districts. Locations' genotypes were named based on location and symbolized by an alphabetical abbreviation. These walnuts were mature, healthy and ready for harvest.

The mean annual precipitation (MAP) is from 1333 to 1870 mm in the Dir district, while in the Swat district it ranges from 1360 to 1660 mm. In District Dir, soil pH ranged from  $6.10 \pm 0.27$  to  $6.88 \pm 0.25$ , whereas in Swat it ranged from  $6.11 \pm 0.15$  to  $6.90 \pm 0.16$ . Light intensity measurements in Dir ranged from  $97 \pm 1.1$  to  $150 \pm 1.6$  Cd, while in Swat, values ranged from  $85.56 \pm 1.5$  to  $155.45 \pm 2.2$  Cd. The electrical conductivity (EC) of soil in Dir ranged from  $0.20 \pm 0.17$  to  $0.61 \pm 0.18$  Ms  $\text{cm}^{-1}$  and in Swat, it ranged between  $0.22 \pm 0.16$  and  $0.60 \pm 0.18$  mS/cm. Soil temperature in Dir ranged from  $19 \pm 0.42$  to  $28 \pm 0.22$  °C, while in Swat it ranged from  $19 \pm 0.35$  to  $27 \pm 0.47$  °C (Table 2).

### Laboratory measurements

In the Plant Ecology Laboratory of the Botany Department, Abdul Wali Khan University, data on the following parameters were recorded using the standard protocol.

### Foliar epidermal study

For anatomical investigation, fresh leaves were collected from two distinct populations and cleaned with distilled water. Narrow, clear sections were prepared using a scalpel and treated with chloral hydrate solution for 3–4 min to decolorize. The sections were then transferred to an alcoholic solution and stained with methyl orange components. At last, through the light microscope, various fragments were investigated and data were recorded (40, 41).

### Determination of palisade ratio

The decolorized leaf sections were removed from the chloral hydrate solution, placed on a slide and examined under a microscope. The palisade cells, located beneath the epidermal layer, were observed and data on palisade parenchymatous cells

were recorded. The palisade ratio was subsequently calculated.

### Scanning electron microscopy

Nut samples from various sites in Swat and Dir districts were sectioned longitudinally using a microtome. Each segment was mounted on an aluminium stub with silver paste and placed in a stub holder under vacuum. The nut sections were then examined using a scanning electron microscope (SEM) at 25X magnification. This part of the experiment was done at the Centralised Resource Laboratory, University of Peshawar, Pakistan.

### Statistical analysis

The data recorded were tabulated. The experimental work was organized in a randomized design and took three replications. For comparison, data were analyzed using mean values in SigmaPlot. Minitab Statistical Software (version 14.20) and the Statistical Package for the Social Sciences (SPSS Inc., United States, version 23) were used for data analysis. Pearson correlation coefficients were also used. Variance (ANOVA) analysis was used to investigate the effects of various climatic factors, mainly precipitation and temperature, on walnut morphological characters. After calculating the mean values of walnut characters, the correlations among various climatic factors were determined using the given formula.

$$r = \frac{\sum xy}{\sqrt{\sum x^2} \times \sqrt{\sum y^2}} \quad (\text{Eqn. 1})$$

Where y = variable and r = Correlation coefficient

## Results

### Leaf anatomy

The shapes and sizes of epidermal cells, pith cells, vascular tissue and palisade cells were examined in leaf anatomy across various altitudes in both populations. A foliar epidermal study was conducted to determine the size and shape of epidermal cells at various altitudes in the two populations. Underneath the epidermal cell, there were palisade cells. Pith cells were composed of a collenchymatous type of cell that was spherical in shape and colourless. In this study, data on surface area, length and width of xylem, epidermal cells, phloem and pith cells were recorded. In general, leaf anatomical traits such as epidermal cell area, xylem cell surface area and phloem cell surface area were larger in Swat, whereas pith cell surface areas were larger in Dir (Table 3; Fig. 2 & 3).

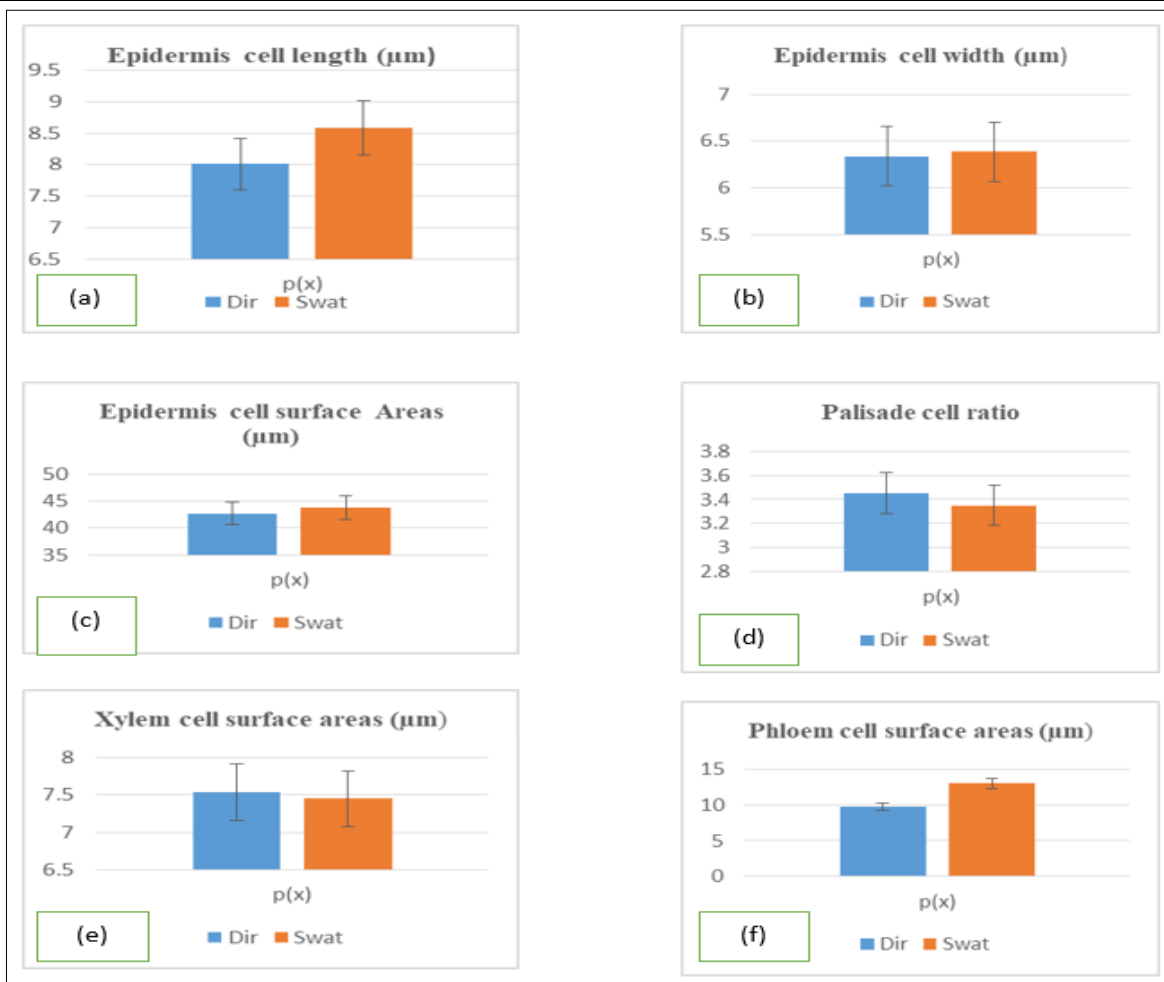
At the districts' Dir, maximum surface area, length and width of pith, phloem and xylem were recorded at the high-altitude location Laram, while lower surface area, length and width were recorded at the low-altitude location Balo Rabat. Significant differences were present in all locations of the District Dir. Similarly, the high surface area, length and width of their epidermis were recorded at the high-altitude location Laram, whereas the low surface area, length and width were recorded at Balo Rabat, which

**Table 2.** Sampling site of Dir and Swat. Pakistan Meteorological Department.

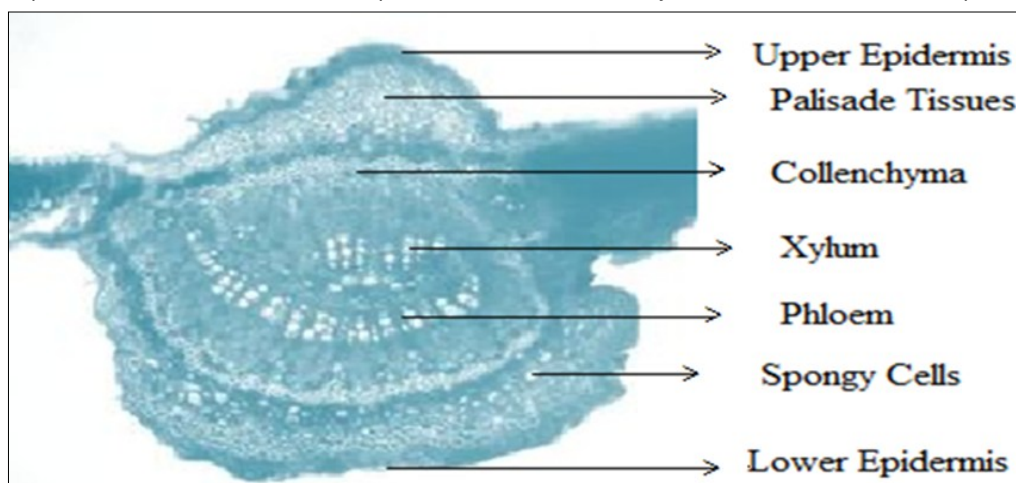
Parameters	District Dir	District Swat
Sites	22	22
Elevation (m)	1062-2590.8	778-2804
Temperature (MAT) Min (°C)	4.0-9.8	4.2-13.7
Temperature (MAT) Max (°C)	24.1-33.9	23.2-33.7
Precipitation (MAP) (mm)	1333-1870	1360-1660
Soil pH	$6.10 \pm 0.27$ - $6.88 \pm 0.25$	$6.11 \pm 0.15$ - $6.90 \pm 0.16$
Light intensity (Cd)	$97 \pm 1.1$ - $150 \pm 1.6$	$85.56 \pm 1.5$ - $155.45 \pm 2.2$
Soil EC (mS $\text{cm}^{-1}$ )	$0.20 \pm 0.17$ - $0.61 \pm 0.18$	$0.22 \pm 0.16$ - $0.60 \pm 0.18$
Soil temperature (°C)	$19 \pm 0.42$ - $28 \pm 0.22$	$19 \pm 0.35$ - $27 \pm 0.47$

**Table 3.** Walnut leaf anatomical traits

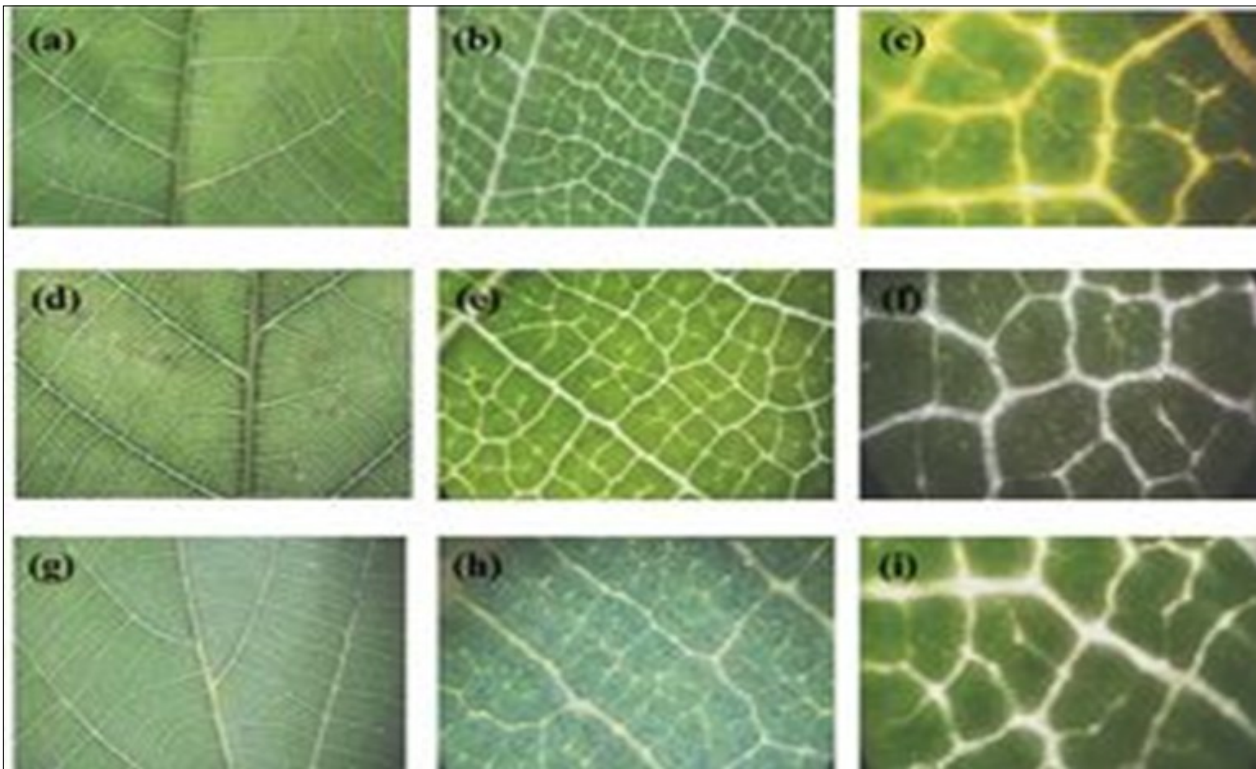
Parameters ( $\mu\text{m}$ )	District Dir	District Swat
Length of the epidermis cell	7.34 $\pm$ 0.43 to 8.67 $\pm$ 0.15	7.43 $\pm$ 0.12 to 9.74 $\pm$ 0.32
Width of an epidermis cell	7.24 $\pm$ 0.17 to 5.43 $\pm$ 0.34	5.41 $\pm$ 0.36 to 7.36 $\pm$ 0.27
Surface area of the epidermis cell surface areas	31.23 $\pm$ 0.34 to 54.16 $\pm$ 0.75	31.55 $\pm$ 0.44 to 56.12 $\pm$ 0.22
Palisade cell ratio	2.3 $\pm$ 0.54 to 4.6 $\pm$ 0.27*	2.2 $\pm$ 0.54 to 4.5 $\pm$ 0.32
Xylem cell length	2.35 $\pm$ 0.08 to 3.84 $\pm$ 0.34	2.42 $\pm$ 0.23 to 3.76 $\pm$ 0.41
Xylem cell width	2.31 $\pm$ 0.67 to 3.59 $\pm$ 0.43	2.53 $\pm$ 0.08 to 3.42 $\pm$ 0.26
Xylem cell surface areas	4.26 $\pm$ 0.65 to 10.82 $\pm$ 0.44	4.81 $\pm$ 0.11 to 10.09 $\pm$ 0.32
Phloem cell length	2.54 $\pm$ 0.98 to 4.63 $\pm$ 0.21	2.65 $\pm$ 0.56 to 4.19 $\pm$ 0.87
Phloem cell width	2.12 $\pm$ 0.64 to 4.22 $\pm$ 0.36	2.82 $\pm$ 0.17 to 4.34 $\pm$ 0.26
Phloem cell surface areas	4.23 $\pm$ 0.25 to 15.38 $\pm$ 0.78	5.91 $\pm$ 0.13 to 20.10 $\pm$ 0.11
Length of pith cell	3.54 $\pm$ 0.12 to 5.78 $\pm$ 0.3	3.07 $\pm$ 0.17 to 5.93 $\pm$ 0.29
Width of pith cell	3.27 $\pm$ 0.11 to 5.54 $\pm$ 0.41	3.34 $\pm$ 0.04 to 5.75 $\pm$ 0.29
Pith cell surface areas	9.08 $\pm$ 0.32 to 25.13 $\pm$ 0.46	8.04 $\pm$ 0.14 to 26.77 $\pm$ 0.22



**Fig. 2.** Histogram of mean values of leaf anatomy traits on the Dir and Swat (a-f). (a) Shows epidermis cell length; (b) shows epidermis cell width; (c) shows epidermis cell surface area; (d) shows palisade cell ratio; (e) shows xylem cell surface area; (f) shows phloem cell surface area.



**Fig. 3.** A typical view of a walnut leaf shows various cells and tissues, including epidermal cells, palisade mesophyll, spongy mesophyll, xylem, and phloem. (Microscope Model: Olympus BX53 and Magnification: 400x).



**Fig. 4.** Showing anatomy of leaves of three different walnut varieties (“a”, “b” and “c”) for soft walnuts leaf anatomy (“d”, “e” and “f”) for hard walnut leaf anatomy (“g”, “h” and “i”) for semi soft leaf anatomy located in districts Dir.

has a lower altitude. At different altitudes, the palisade cell ratio also differs (Fig. 4).

At district Swat, the maximum surface area, length and width of pith, phloem and xylem were recorded at the high altitudinal location Malam Jaba, while the minimum surface area, length and width were recorded in the low altitudinal location Rangila. Significant differences were present in all locations of the district Swat. Similarly, the high surface area, length and width of their epidermis were recorded at the high-altitude location Malam Jaba, whereas the low surface area, length and width were recorded at Rangila, which has a lower altitude. At different altitudes, the palisade cell ratio also differs (Fig. 5).

#### Anatomy of the nut

In nut anatomy, the sizes and shapes of the pericarp, pellicle and cotyledons were investigated using Vernier callipers, SEM and a simple scale. The pericarp has two parts: an exocarp, which has an outermost green husk surrounding the nut. Endocarp is present inside the shell, which is furrowed, wrinkled or rough and generally hard for the protection of cotyledons. Nuts usually contain two cotyledons, which are parted by a central thinner plate extending from the endocarp's inside layer. Cotyledons contain deep grooves and are folded. Thin skin adjacent to the cotyledons is a pellicle that helps in their safety. Dissected sections of cotyledons show two diverse sheets of the testa, which result from the development inside the integument of the ovule. The nut embryo is enclosed in its pellicle, where the present visible axis.

**Table 4.** Walnut nut anatomical traits

Parameters	Districts Dir	District Swat
Exocarp thickness (mm)	3.29 ± 0.31 to 4.26 ± 0.15	3.42 ± 0.34 to 4.25 ± 0.2
Thickness of endocarp (mm)	1.23 ± 0.42 to 1.55 ± 0.62	1.26 ± 0.54 to 1.58 ± 0.32
Width of Cotyledon (mm)	24.22 ± 0.32 to 34.21 ± 0.32	23.14 ± 0.14 to 30.54 ± 0.23
Length of cotyledon (mm)	29.10 ± 0.21 to 41.20 ± 0.15	28.43 ± 0.42 to 42.42 ± 0.51
Width of plate (mm)	24.12 ± 0.37 to 34.01 ± 0.52	23.17 ± 0.82 to 33.74
Length of plate (mm)	28.15 ± 0.21 to 40.33 ± 0.01	27.35 ± 0.02 to 41.22 ± 0.01
Thickness of plate (mm)	0.16 ± 0.16 to 0.32 ± 0.21	0.14 ± 0.45 to 0.33 ± 0.65
Thickness of pellicle (µm)	32.05 ± 0.75 to 48.54 ± 0.16	35.05 ± 0.32 to 53.05 ± 0.35

#### Pericarp of the nut

The pericarp of a nut has two main parts: the exocarp and the endocarp. Exocarp is the outermost green husk surrounding the whole nut, while endocarp is inner side to the shell which is wrinkled or furrowed, rough and generally hard for the protection of cotyledon. In general, nut anatomical traits both exocarp and endocarp thickness were larger in Swat as compared to the Dir (Table 4; Fig. 6–9).

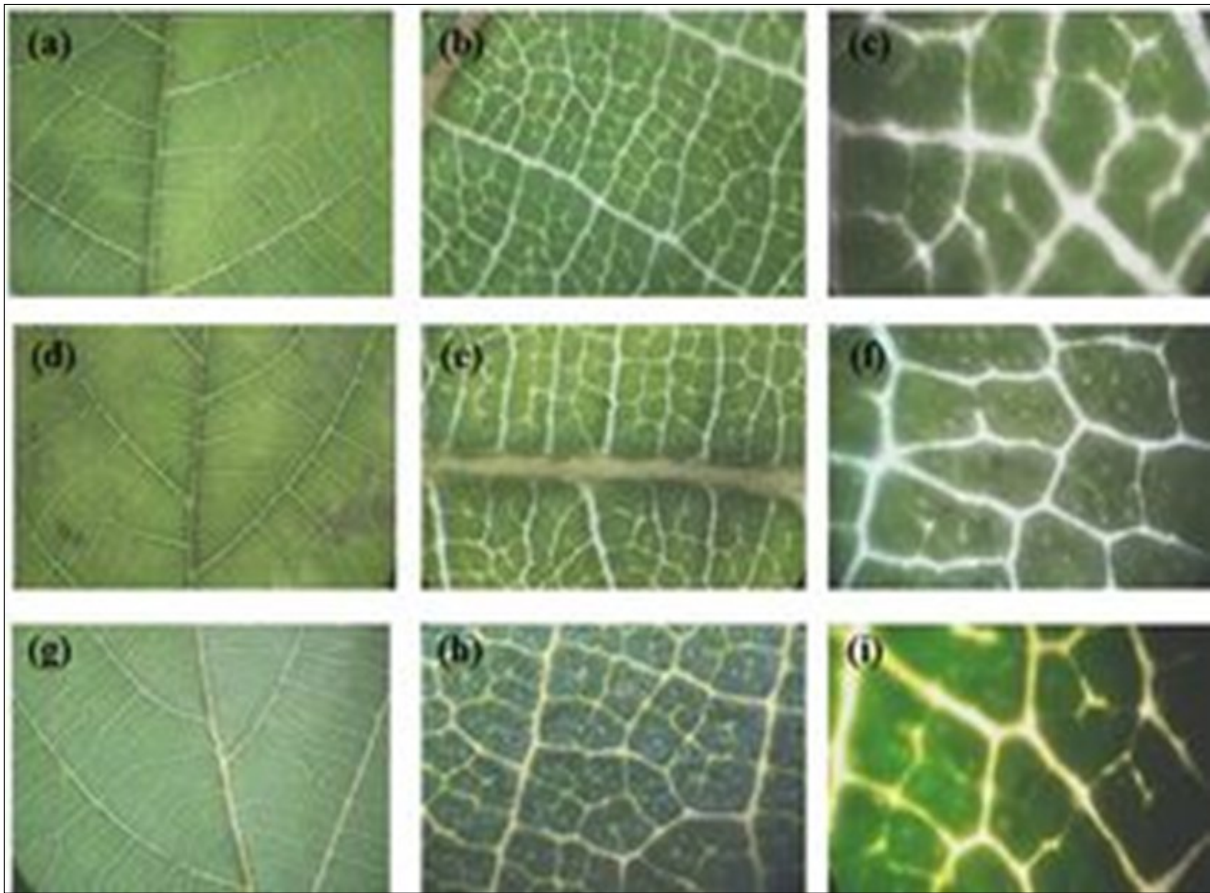
#### Nut thin plate and cotyledons of the nut

Nut contains two cotyledons, which are parted by a centre thinner plate lengthening from the endocarp to the inside layer. Nuts' cotyledons have deep grooves and are folded. Dissected sections of cotyledons contain two dissimilar strata of testa, which result from the development inside the ovule integument. In general, the nut anatomical traits, both the nut thin plate and the cotyledons of the nut, were larger in Dir as compared to the Swat (Table 4; Fig. 6–9).

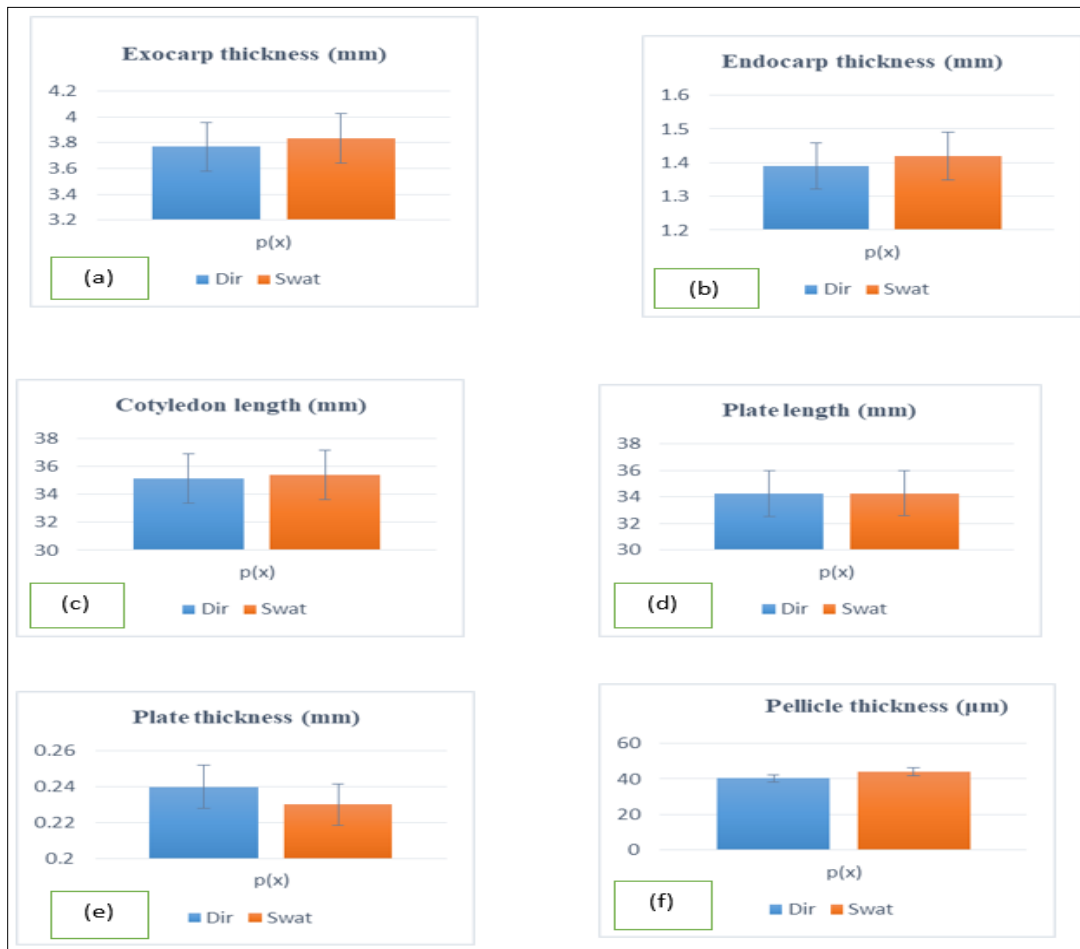
#### Nut pellicle

The thin skin around the cotyledons was a pellicle that helped protect them. In general, the thickness of the pellicle, an anatomical trait of nuts, was larger in Swat than in Dir (Table 4, Fig. 6–9).

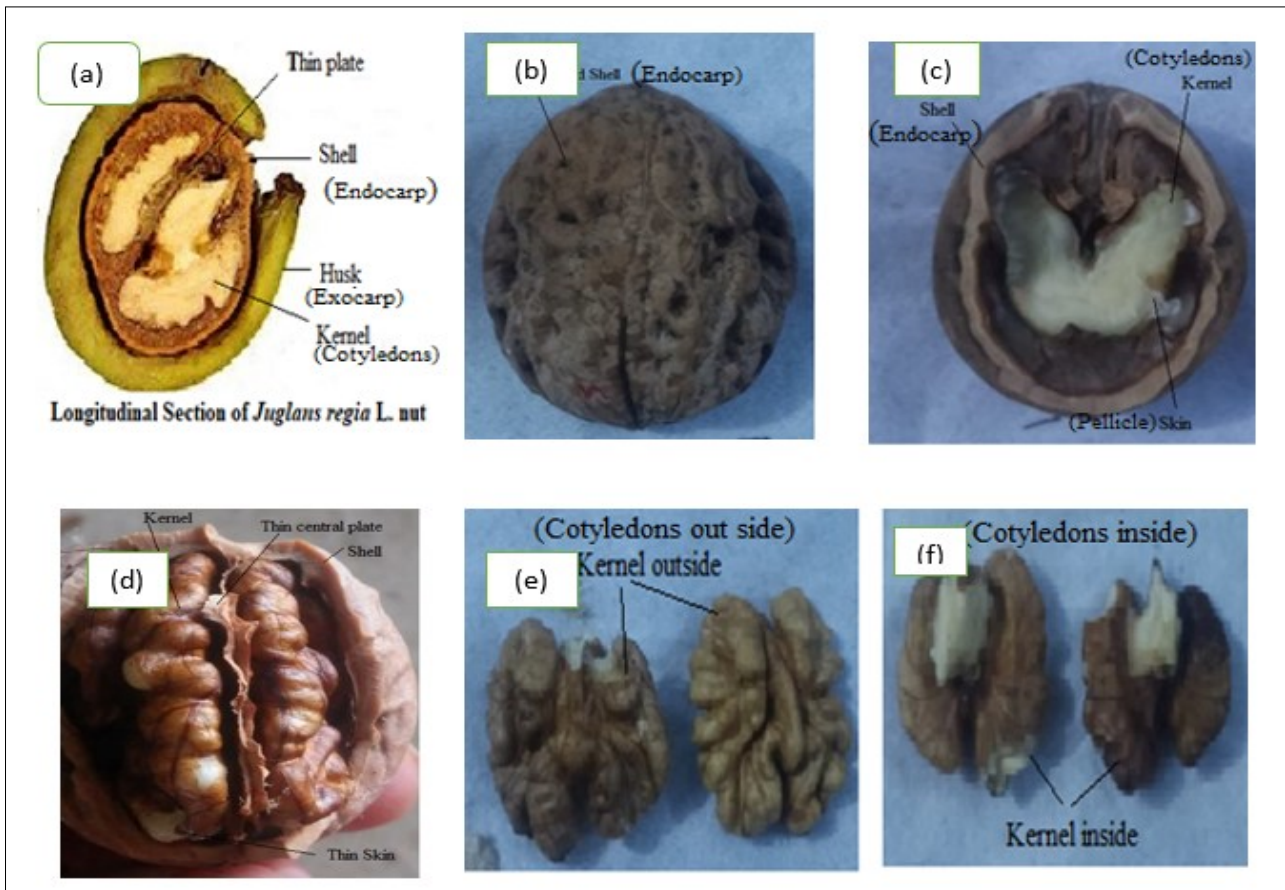
In both regions, Dir and Swat, the thickness of the nut endocarp and exocarp was lower at high altitudes than at lower altitudes, whereas nut cotyledon length and width were higher at higher altitudes. Similarly, in both regions, the nut plate length and width were more at high altitude regions as compared to the low



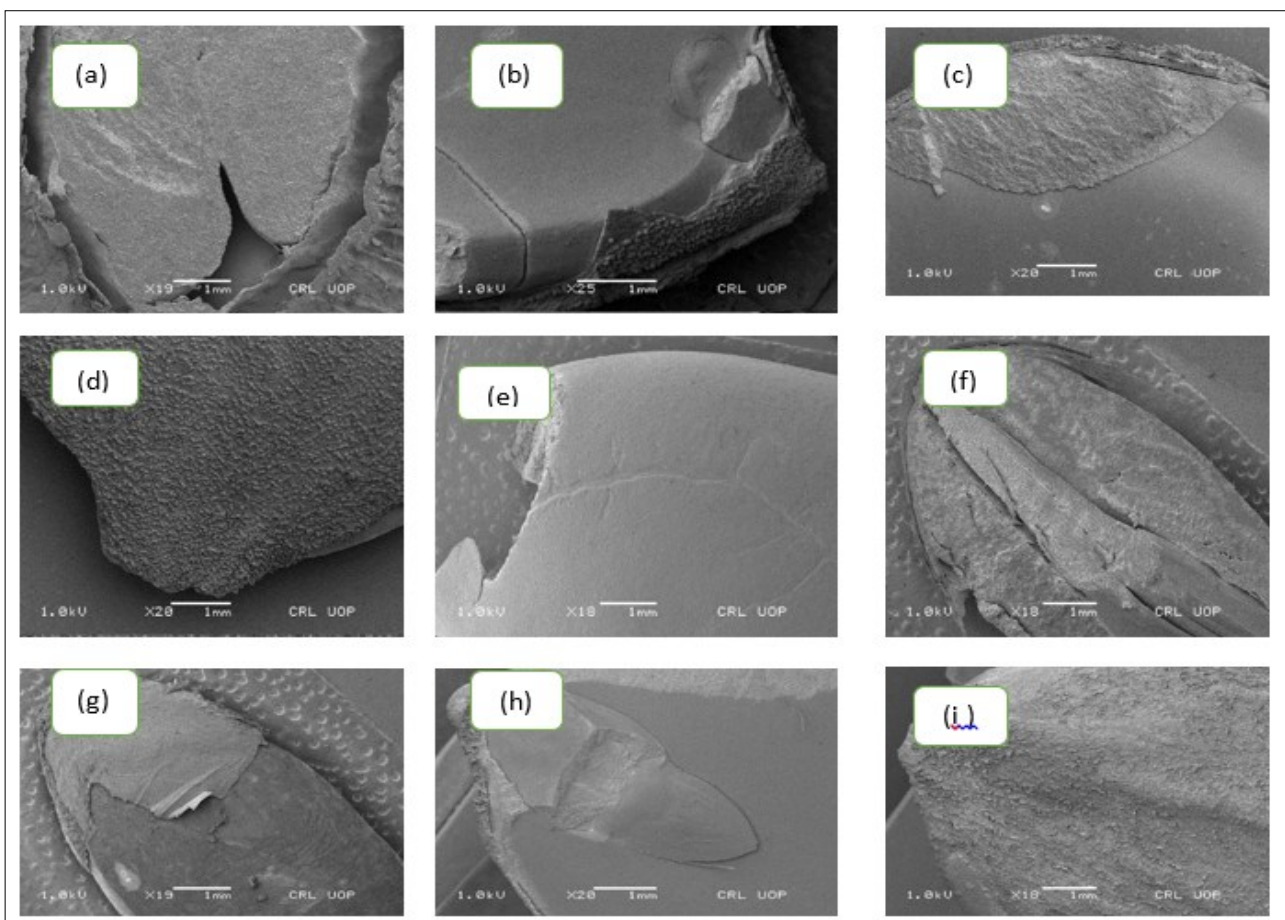
**Fig. 5.** Showing anatomy of leaves of three different walnut varieties (“a”, “b” and “c”) for soft walnuts leaf anatomy (“d”, “e” and “f”) for hard walnut leaf anatomy (“g”, “h” and “i”) for semi soft leaf anatomy located in district Swat.



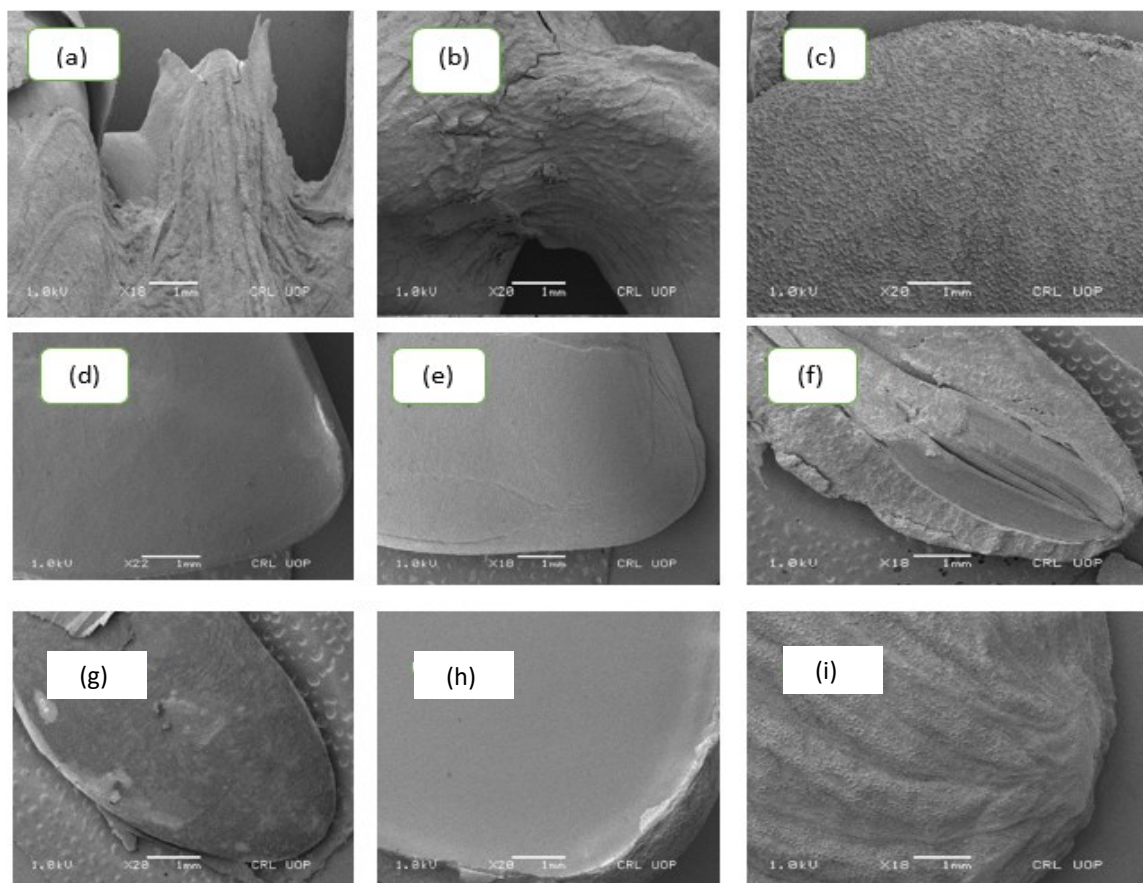
**Fig. 6.** Histogram of mean values of walnut anatomical traits on two populations i.e. districts Dir and district Swat (a-f). (a) Shows exocarp thickness; (b) shows endocarp thickness; (c) shows cotyledon length; (d) shows plate length; (e) shows plate thickness; (f) shows pellicle thickness.



**Fig. 7.** Various anatomical sections of walnut nut: (a) Longitudinal view of the nut; (b) outer wrinkled shell; (c) internal view showing endocarp, pellicle, and cotyledons; (d) thin partition plate between the two cotyledons; (e) separated cotyledons outside the shell; (f) external view of the two cotyledons of a nut.



**Fig. 8.** Showing district Swat scanning electron micrograph of *Juglans regia* L. (a-i), (a) showing sunken collapse; (b and c) showing equatorial view and collapse surface; (d and i) showing close view of exine; (e and h) showing collapse surface; (f) showing equatorial view; (g) showing polar view of nuts.



**Fig. 9.** Showing district Swat scanning electron micrograph of *Juglans regia* L. (a-i), (a and b) showing sunken collapse; (c and i) showing equatorial view and collapse surface; (d and e) showing close view of exine; (e and h) showing collapse surface; (f) showing equatorial view; (g) showing

altitude regions, while the pellicle thickness and plate thickness were less at high altitude sites. Significant differences exist in all locations (Table 4; Fig. 6–9).

## Discussion

### Effect of climatic drivers on anatomical traits of two populations of walnuts

#### Anatomy of the leaf

Environmental factors can significantly impact plant growth, altering leaf morphology, anatomy and physiological functions (42). Environmental conditions play a crucial role in shaping species distribution, favoring plants that adapt to local conditions while others face extinction. For instance, high-altitude plants often develop thicker epidermal cells and increased palisade tissue layers (43, 44). The Dir and Swat districts exhibit distinct environmental and geographical differences. Notably, Dir has a higher mean annual temperature, precipitation, soil EC and soil temperature, whereas Swat has higher soil pH, light intensity and altitude (Table 2).

Comparison of leaf anatomy between Dir and Swat revealed significant variations. Swat had larger epidermis cell width, length and surface area, as well as larger phloem and pith cell dimensions. In contrast, Dir had a larger palisade cell ratio, xylem cell dimensions and phloem cell length, reflecting adaptations to differing environmental conditions (Table 3). Our findings suggest anatomical features play a key role in adapting to diverse environments. Previous studies support this, showing that

low temperatures impact young leaf cells, driving adaptations to specific conditions (45). Leaf growth, cell size and development are enhanced by warmer temperatures and an ample water supply (45). Low temperatures in Dir may contribute to larger palisade cell ratios, xylem cell dimensions and phloem cell lengths, potentially an adaptive response to the environment.

Walnuts' deep root systems enable efficient water transport and absorption, supporting adaptations that maintain optimal leaf anatomy, including epidermis and palisade tissues, to balance transpiration demands. Temperature showed a strong negative correlation with leaf anatomy parameters, whereas light intensity and altitude showed a strong positive correlation (Table 5). Precipitation showed a positive correlation with leaf anatomical characters. Soil EC had a mixed effect, negatively correlating with palisade cell ratio and epidermal cell size, but positively correlating with phloem cell area, pith cell size and xylem cell size. Soil temperature, however, showed a predominantly negative correlation with palisade cell ratio, epidermal cell area, phloem cell size, pith cell area and xylem cell size (Table 5). Thus, our results show similarities with (44).

Walnut leaves in Dir and Swat districts adapt to their environment, developing larger epidermis, pith cells and vascular bundles in areas with specific conditions: high light intensity, altitude, precipitation and soil EC, but lower soil temperature and annual max temperature, often in slightly acidic soils. Our results showed resemblances with previous studies, which examined that the palisade cell ratio and epidermal cells develop larger in higher altitude places (43, 44). It was also reported that leaf morphology correlates with precipitation and temperature (46). However, our

**Table 5** Correlation between climatic factors and walnut leaf anatomical characters

Environmental factors	Districts	Coefficient of Correlation				
		Epidermal cell area (µm)	Palisade cell ratio (µm)	Xylem cell area (µm)	Phloem cell area (µm)	Pith cell area (µm)
Temperature	Dir	-.909**	-.912**	-.974**	-.887**	-.965**
	Swat	-.920**	-.963**	-.857**	-.928**	-.940**
Precipitation	Dir	.167	.177	.396	.348	.250
	Swat	.221	.111	.231	.334	.270
Altitude	Dir	.930**	.945**	.969**	.900**	.980**
	Swat	.855**	.890**	.894**	.951**	.891**
Soil pH	Dir	-.145	.056	.075	.101	-.080
	Swat	-.119	.051	.174	.036	-.008
Light intensity	Dir	.947**	.810	.847**	.804**	.945**
	Swat	.904**	.817	.863**	.849**	.967**
Soil Temperature	Dir	-.039	-.075	-.407*	-.457*	-.475*
	Swat	-.309	-.309	-.494*	-.426*	-.426*
Soil EC	Dir	-.052	-.082	.216	.128	.111
	Swat	-.071	-.026	.316	.126	.126

Correlation is significant at the 0.05 level (2-tailed), while \*\* Correlation is significant at the 0.01 level (2-tailed).

results are in contradiction to those of investigations that noted that epidermal cell size was smaller at high altitudes (47, 48). It was also found that latitude and temperature were the most important predictors of variation in leaf features, whereas precipitation had a smaller effect (49).

### Nut Anatomy

Walnuts exhibit notable diversity in anatomical traits, particularly in nut features, reflecting adaptations to local environments. Studies highlight significant variations in walnut traits between the Dir and Swat regions, underscoring the wide-ranging diversity within these areas (50).

Shell thickness plays a crucial role in protecting the kernel from external environmental stresses, serving as a defense mechanism. In Dir, the maximum thickness of endocarp and exocarp was observed in a region of Balo Rabat, whereas the cotyledon maximum length and width were recorded in the Laram. Similarly, in district Swat, the maximum thickness of the endocarp and exocarp was observed in the Rangila region, while the maximum lengths and widths of the cotyledons were recorded in Malam Jaba (Table 4; Fig. 4–7). Our results were consistent with a previous study that reported similar endocarp thickness values (51). However, studies conducted in north-eastern regions (52), East Anatolia (53) and other parts of Turkey (54) recorded comparatively lower endocarp thickness values. Thus, it may have a different effect on the anatomy of different species.

In the Dir and Swat regions, walnut traits vary with altitude: low-altitude sites have thicker endocarp, exocarp and plates, but smaller cotyledons and pellicles, which are associated with low light, high precipitation and high soil temperature. Conversely, high-altitude sites have thinner shells but larger cotyledons and pellicles, which are linked to high light, high precipitation and low soil temperature. These results all showed resemblances to previous studies, which reported that seed traits vary across habitats and other climatic factors (55, 56). It was further observed from separate studies that wild walnut plants exhibit considerable variation in traits such as nut size (ranging from small to large), shell thickness (from thin to thick) and shape (from oval to round) (57, 58). Several investigators observed that the traits of the walnut are affected by water stress (59), temperature (60), rainfall, light (61) in various ages. In addition, it was reported that air and soil temperatures affect the seed exocarp (62).

Correlations among anatomical traits may reveal fundamental biological developments that are of considerable interest in walnut genetic diversity (63). In the Dir and Swat districts, altitude and temperature positively correlate with nut anatomical characters. Light intensity has mixed effects, negatively correlating with shell thicknesses but positively with cotyledon dimensions. Soil temperature mostly shows negative correlations, except for pellicle and plate thickness. Precipitation's effects are mixed, while soil EC positively correlates with shell and cotyledon dimensions but negatively with pellicle and plate thickness. Coefficient correlation between all environmental factors, i.e., precipitation, altitude, temperature, light intensity, soil pH, soil EC and soil temperature, to

**Table 6.** Correlation between climatic factors and walnut nuts' anatomical characters

Environmental factors	Districts	Coefficient of Correlation					
		Exocarp thickness (mm)	Endocarp thickness (mm)	Cotyledon length (mm)	Cotyledon width (mm)	Plate thickness (mm)	Pellicle thickness (µm)
Temperature	Dir	.957**	.968**	.891**	.828**	.983**	.976**
	Swat	.947**	.968**	.817**	.830**	.966**	.964**
Precipitation	Dir	.370	.274	.169	-.007	-.332	-.289
	Swat	.208	.126	.283	-.191	-.224	-.229
Altitude	Dir	.972**	.982**	.680**	.880**	.972**	.977**
	Swat	.847**	.894**	.640**	.841**	.913**	.902**
Soil pH	Dir	.080	.019	.113	.114	.094	.077
	Swat	.114	.017	.168	.059	.097	.044
Light intensity	Dir	-.963**	-.927**	.566**	.599**	-.918**	-.927**
	Swat	-.956**	-.988**	.556**	.550**	-.974**	-.964**
Soil Temperature	Dir	-.023	-.023	-.230*	-.345	.354	.101
	Swat	-.039	-.092	-.217*	-.242	.352	.121
Soil EC	Dir	.251	.051	.171	.130	-.013	-.073
	Swat	.250	.027	.229	.227	-.007	-.230

Correlation is significant at the 0.05 level (2-tailed), while \*\* Correlation is significant at the 0.01 level (2-tailed).

all characters of leaf anatomy, i.e. endocarp thickness, thickness of exocarp, width of cotyledon, cotyledon length, pellicle thickness and thickness of plate, was noted in Table 6. Separate studies also observed a positive correlation between altitude and seed characters across species and within species (64, 65). Based on the existing results, a wide range of genetic diversity has been described, revealing wide-ranging anatomical differences in walnut areas of the Khyber-Pakhtunkhwa, Pakistan region.

## Conclusion

The study investigated the impact of climatic factors on *Juglans regia* L. (walnut) nuts and leaves anatomy in Dir and Swat districts. Results showed significant anatomical variations due to differences in altitude, temperature and light intensity. Swat had larger leaf epidermis, phloem and pith cells, while Dir had larger xylem cells and a palisade cell ratio. Nut exocarp and endocarp thickness were lower at high altitudes, while cotyledon length and width were greater. The study highlights the adaptive importance of anatomical features and the need for further investigation and conservation of local genetic resources in Pakistan's mountainous areas.

## Acknowledgements

The authors are grateful to the local inhabitants of different communities of Barcharai Mountain, District Dir Lower, Pakistan, for helping in the identification of local names of the plant species.

## Authors' contributions

MK designed the study conception and framework. IK supervised the study. HUR performed the experimental research. M & RZ interpreted the results. MR drafted the manuscript. RU encouraged the first author to conceive the presented idea. FU and MI performed data analysis. All authors read and approved the final manuscript.

## Compliance with ethical standards

**Conflict of interest:** Authors do not have any conflict of interest to declare.

**Ethical issues:** None

## References

- Savill PS. The silviculture of trees used in British forestry. 3rd ed. Wallingford (UK): CABI. <https://doi.org/10.1079/9781786393920.0000>
- de Rigo D, Enescu CM, Houston Durrant T, Tinner W, Caudullo G. *Juglans regia* in Europe: distribution, habitat, usage and threats. In: San-Miguel-Ayanz J, de Rigo D, Caudullo G, Houston Durrant T, Mauri A, eds. European atlas of forest tree species. Luxembourg: Publications Office of the European Union; 2016. p. e01977c+.
- Abbas SR, Khan F. Importance and strength of walnut (*Juglans regia*) as a medicinal plant: A Review. *J Nat Sci*. 2020;8(2):30-34.
- Ros E, Izquierdo-Pulido M, Sala-Vila A. Beneficial effects of walnut consumption on human health: Role of micronutrients. *Curr Opin Clin Nutr Metab Care*. 2018;21(6):498-504. <https://doi.org/10.1097/MCO.0000000000000508>
- Hassankhah A, Vahdati K, Rahemi M, Hassani D, Sarikhani Khorami S. Persian walnut phenology: effect of chilling and heat requirements on budbreak and flowering date. *Int J Horticult Sci Technol*. 2017;4(2):259-71.
- Shah RA, Bakshi P, Jasrotia A, Itoo H, Padder BA, Gupta R, et al. Morphological to molecular markers: plant genetic diversity studies in walnut (*Juglans regia* L.)-a review. *Erwerbs Obstbau*. 2023;65(5):1499-511. <https://doi.org/10.1007/s10341-023-00892-x>
- Han Y, Zheng Y, Li S, Mo R, Long X, Liu Y. Effects of drying process with different temperature on the nutritional qualities of walnut (*Juglans regia* L.). *Food Sci Technol Res*. 2019;25(2):167-77. <https://doi.org/10.3136/fstr.25.167>
- Lancefield CS, Panovic I, Deuss PJ, Barta K, Westwood NJ. Pre-treatment of lignocellulosic feedstocks using biorenewable alcohols: towards complete biomass valorisation. *Green Chem*. 2017;19:202-14. <https://doi.org/10.1039/C6GC02739C>
- Yang H, Xiao X, Li J, Wang F, Mi J, Shi Y, et al. Chemical compositions of walnut (*Juglans* spp.) oil: Combined effects of genetic and climatic factors. *Forests*. 2022;13(6):962. <https://doi.org/10.3390/f13060962>
- Jahanban-Esfahlan A, Amarowicz R. Walnut (*Juglans regia* L.) shell pyrolygneous acid: chemical constituents and functional applications. *RSC Adv*. 2018;8(40):22376-91. <https://doi.org/10.1039/C8RA03684E>
- Jahanban-Esfahlan A, Jahanban-Esfahlan R, Tabibiazar M, Roufegarinejad L, Amarowicz R. Recent advances in the use of walnut (*Juglans regia* L.) shell as a valuable plant-based bio-sorbent for the removal of hazardous materials. *RSC Adv*. 2020;10(12):7026-47. <https://doi.org/10.1039/C9RA10084A>
- Wahid M, Gawli Y, Puthusseri D, Kumar A, Shelke MV, Ogale S. Nutty carbon: morphology replicating hard carbon from walnut shell for Na ion battery anode. *ACS Omega*. 2017;2(7):3601-9. <https://doi.org/10.1021/acsomega.7b00633>
- Trandafir I, Cosmulescu S, Botu M, Nour V. Antioxidant activity and phenolic and mineral contents of the walnut kernel (*Juglans regia* L.) as a function of the pellicle color. *Fruits*. 2016;71(3):177-84. <https://doi.org/10.1051/fruits/2016006>
- Jabli M, Sebeia N, Boulares M, Faidi K. Chemical analysis of the characteristics of Tunisian *Juglans regia* L. fractions: antibacterial potential, gas chromatography-mass spectroscopy and a full investigation of their dyeing properties. *Ind Crops Prod*. 2017;108:690-9. <https://doi.org/10.1016/j.indcrop.2017.07.032>
- Raja V, Ahmad SI, Irshad M, Wani WA, Siddiqi WA, Shreaz S. Anticandidal activity of ethanolic root extract of *Juglans regia* (L.): effect on growth, cell morphology and key virulence factors. *J Mycol Med*. 2017;27(4):476-86. <https://doi.org/10.1016/j.mycmed.2017.07.002>
- Abbasi Z, Jelodar G, Nazifi S. Extracts of the walnut leaf (*Juglans regia* L.) improved activity of sorbitol dehydrogenase in diabetic male rats. *Physiol Pharmacol*. 2017;21(1):80-6.
- Jahanban-Esfahlan A, Ostadrahimi A, Tabibiazar M, Amarowicz R. A comprehensive review on the chemical constituents and functional uses of walnut (*Juglans* spp.) husk. *Int J Mol Sci*. 2019;20(16):3920. <https://doi.org/10.3390/ijms20163920>
- Heywood VH. Scanning electron microscopy in the study of plant materials. *Micron*. 1969;1(1):1-14. [https://doi.org/10.1016/0047-7206\(69\)90002-8](https://doi.org/10.1016/0047-7206(69)90002-8)
- Crivellaro A, Ruffinatto F, Zöller-Engelhardt M, Piermattei A, Beck T. Wood under the lens: unveiling ancient Egyptian heritage. *J Cult Herit*. 2025;74:138-47. <https://doi.org/10.1016/j.culher.2025.06.002>
- Ali M, Liu YJ, Xia QP, Bahadur S, Hussain A, Shao JW, et al. Pollen micromorphology of eastern Chinese *Polygonatum* and its role in taxonomy by using scanning electron microscopy. *Microsc Res Tech*. 2021;84(7):1451-61. <https://doi.org/10.1002/jemt.23701>
- Luo P, Zhou Y, Zhou S, Lu Y, Xu C, Xia W, et al. Fast anion-exchange from CsPbI<sub>3</sub> to CsPbBr<sub>3</sub> via Br<sub>2</sub>-vapor-assisted deposition for air-stable all-inorganic perovskite solar cells. *Chem Eng J*. 2018;343:146-54. <https://doi.org/10.1016/j.cej.2018.03.009>

22. Han X, Wang R, Zhou Y, Fei L, Sun H, Lai S, et al. Mapping the mouse cell atlas by microwell-seq. *Cell*. 2018;172(5):1091–107. <https://doi.org/10.1016/j.cell.2018.02.001>
23. Lévesque M, Rigling A, Bugmann H, Weber P, Brang P. Growth response of five co-occurring conifers to drought across a wide climatic gradient in Central Europe. *Agric For Meteorol*. 2014;197:1–12. <https://doi.org/10.1016/j.agrformet.2014.06.001>
24. Hemery GE, Clark JR, Aldinger E, Claessens H, Malvolti ME, O'Connor E, et al. Growing scattered broadleaved tree species in Europe in a changing climate: a review of risks and opportunities. *Forestry*. 2010;83(1):65–81. <https://doi.org/10.1093/forestry/cpp034>
25. Lenzion J, Leuschner C. Growth of European beech (*Fagus sylvatica* L.) saplings is limited by elevated atmospheric vapour pressure deficits. *For Ecol Manag*. 2008;256(4):648–55. <https://doi.org/10.1016/j.foreco.2008.05.008>
26. Svenning JC, Sandel B. Disequilibrium vegetation dynamics under future climate change. *Am J Bot*. 2013;100(7):1266–86. <https://doi.org/10.3732/ajb.1200469>
27. Ji J, Wei X, Guan H, Jin Z, Yue X, Jiang Z, et al. Evaluation of the impact of ecological factors on the habitat suitability and bioactive components accumulation of the medicinal holoparasitic plant *Cynomorium songaricum* using machine learning models. *Front Plant Sci*. 2025;16:1586682. <https://doi.org/10.3389/fpls.2025.1586682>
28. Kostina M, Barabanshikova NS, Bityugova GV, Yasinskaya OI, Dubach AM. Structural modifications of birch (*Betula pendula* Roth.) crown in relation to environmental conditions. *Contemp Probl Ecol*. 2015;8:584–97. <https://doi.org/10.1134/S1995425515050091>
29. Rôças G, Scarano FR, Barros CF. Leaf anatomical variation in *Alchornea triplinervia* (Spreng) Müll Arg. (Euphorbiaceae) under distinct light and soil water regimes. *Bot J Linn Soc*. 2001;136(2):231–8. <https://doi.org/10.1111/j.1095-8339.2001.tb00568.x>
30. Chartzoulakis K, Patakas A, Kofidis G, Bosabalidis A, Nastou A. Water stress affects leaf anatomy, gas exchange, water relations and growth of two avocado cultivars. *Sci Hortic*. 2002;95(1–2):39–50. [https://doi.org/10.1016/S0304-4238\(02\)00016-X](https://doi.org/10.1016/S0304-4238(02)00016-X)
31. Dasti AA, Bokhari TZ, Malik SA, Akhtar R. Epidermal morphology in some members of family Boraginaceae in Baluchistan. *Asian J Plant Sci*. 2003;2(1):42–7. <https://doi.org/10.3923/ajps.2003.42.47>
32. Ventrella MC, Marinho CR. Morphology and histochemistry of glandular trichomes of *Cordia verbenacea* DC. (Boraginaceae) leaves. *Braz J Bot*. 2008;31(3):457–67. <https://doi.org/10.1590/S0100-84042008000300010>
33. de Souza LA. Morphology and anatomy of the *Cordia trichotoma* (Vell.) Arrab ex IM Johnst diaspore (Boraginaceae). *Braz Arch Biol Technol*. 2008;51(4):561–8. <https://doi.org/10.1590/S1516-89132008000400014>
34. Ló SMS, Duarte MR. Leaf and stem morpho-anatomy of *Cordia americana* (L.) Gottschling & J.S. Mill., Boraginaceae. *Lat Am J Pharm*. 2011;30(4):823–8.
35. Wan T, Liu ZM, Li LF, Leitch AR, Leitch IJ, Lohaus R, et al. A genome for gnetophytes and early evolution of seed plants. *Nat Plants*. 2018;4:82–9. <https://doi.org/10.1038/s41477-017-0097-2>
36. Nordahlía AS, Lim SC, Anwar UMK. Wood anatomical features of *Aquilaria* (Thymelaeaceae) and *Gonystylus* (Gonystylaceae) in Malaysia. *Malayan Nat J*. 2017;69(1):63–9.
37. Schmid R, Carlquist S, Hufford LD, Webster GL. Systematic anatomy of *Oceanopapaver*, a monotypic genus of the Capparaceae from New Caledonia. *Bot J Linn Soc*. 1984;89(2):119–52. <https://doi.org/10.1111/j.1095-8339.1984.tb01005.x>
38. McKenney DW, Pedlar JH, Lawrence K, Campbell K, Hutchinson MF. Potential impacts of climate change on the distribution of North American trees. *Bioscience*. 2007;57(11):939–48. <https://doi.org/10.1641/B571106>
39. Kremer A, Ronce O, Robledo-Arnuncio JJ, Guillaume F, Bohrer G, Nathan R, et al. Long-distance gene flow and adaptation of forest trees to rapid climate change. *Ecol Lett*. 2012;15(4):378–92. <https://doi.org/10.1111/j.1461-0248.2012.01746.x>
40. Ishtiaq M, Maqbool M, Hussain T, Bhatti KH, Mushtaq W, Nadeem A. Application of leaf epidermal anatomical technique for identification of some grass species from district Bhimber of Azad Jammu and Kashmir, Pakistan. *Pak J Bot*. 2018;50(5):1853–63.
41. Khandelwal KR. *Practical Pharmacognosy*. Pune: Nirali Prakashan; 2008.
42. Gao JP, Wang YH, Chen DF. Anatomical characteristics of leaf epidermis and vessel elements of *Schisandra sphenanthera* from different districts and their relationships to environmental factors. *Acta Bot Boreali-Occident Sin*. 2003;23(5):715–23.
43. Li C, Cheng M, Tang Y, Jiang C, Shi L. Characteristics comparison of leaf anatomy structure and photosynthesis of two *Salix* species at Qinghai-Xizang Plateau. *Acta Bot Boreal Occid Sin*. 2009;29(2):275–82.
44. Shi J, Levinson DF, Duan J, Sanders AR, Zheng Y, Pe'Er I, et al. Common variants on chromosome 6p22.1 are associated with schizophrenia. *Nature*. 2009;460:753–7. <https://doi.org/10.1038/nature08192>
45. Fei SL, Fang JY, Fan YJ, Zhao K, Liu XJ, Cui KM. Anatomical characteristics of leaves and woods of *Fagus lucida* and their relationship to ecological factors in Mountain Fanjingshan, Guizhou, China. *J Integr Plant Biol*. 1999;41(9):1002–9.
46. Sinnott EW, Bailey IW. Investigations on the phylogeny of the angiosperms. V. Foliar evidence as to the ancestry and early climatic environment of the angiosperms. *Am J Bot*. 1915;2:1–22. <https://doi.org/10.1002/j.1537-2197.1915.tb09388.x>
47. Lin J, Jach ME, Ceulemans R. Stomatal density and needle anatomy of Scots pine (*Pinus sylvestris*) are affected by elevated CO<sub>2</sub>. *New Phytol*. 2001;150(3):665–74. <https://doi.org/10.1046/j.1469-8137.2001.00124.x>
48. Tiwari S, Srivastava AK, Singh AK. Heterogeneity in pre-monsoon aerosol characteristics over the Indo-Gangetic Basin. *Atmos Environ*. 2013;77:738–47. <https://doi.org/10.1016/j.atmosenv.2013.05.035>
49. Meng H, Wei X, Franklin SB, Wu H, Jiang M. Geographical variation and the role of climate in leaf traits of a relict tree species across its distribution in China. *Plant Biol*. 2017;19(4):552–61. <https://doi.org/10.1111/plb.12564>
50. Mosivand M, Hassani D, Payamnour V, Jafar Aghaei M. Comparison of tree, nut and kernel characteristics in several walnut species and inter-specific hybrids. *Crop Breed J*. 2013;3(1):25–30.
51. Zhadan V, Strukov M. Breeding walnut for fruit size. *Plant Breed Abstr*. 1977.
52. Yarılgac T, Koyuncu F, Koyuncu MA, Kazankaya A, Sen S. Some promising walnut selections (*Juglans regia* L.). *Acta Hortic*. 1999;544:93–93.
53. Akca Y, Ozogun S. Selection of late leafing, late flowering, laterally fruitful walnut (*Juglans regia*) types in Turkey. *N Z J Crop Hortic Sci*. 2004;32(4):337–42. <https://doi.org/10.1080/01140671.2004.9514313>
54. Aslantaş R. Identification of superior walnut (*Juglans regia*) genotypes in north-eastern Anatolia, Turkey. *N Z J Crop Hortic Sci*. 2006;34(3):231–7. <https://doi.org/10.1080/01140671.2006.9514412>
55. Wang Y, Wang J, Lai L, Jiang L, Zhuang P, Zhang L, et al. Geographic variation in seed traits within and among forty-two species of *Rhododendron* (Ericaceae) on the Tibetan plateau: relationships with altitude, habitat, plant height and phylogeny. *Ecol Evol*. 2014;4(10):1913–23. <https://doi.org/10.1002/ece3.1067>
56. Bu H, Chen X, Xu X, Liu K, Jia P, Du G. Seed mass and germination in an alpine meadow on the eastern Tsinghai–Tibet plateau. *Plant Ecol*. 2007;191(1):127–49. <https://doi.org/10.1007/s11258-006-9221-5>
57. Bayang JP, Laya A, Kolla MC, Koubala BB. Variation of physical properties, nutritional value and bioactive nutrients in dry and fresh wild edible fruits of twenty-three species from Far North region of

- Cameroon. *J Agric Food Res.* 2021;4:100146. <https://doi.org/10.1016/j.jafr.2021.100146>
58. Han DY, Han PJ, Rumbold K, Koricha AD, Duan SF, Song L, et al. Adaptive gene content and allele distribution variations in the wild and domesticated populations of *Saccharomyces cerevisiae*. *Front Microbiol.* 2021;12:631250. <https://doi.org/10.3389/fmicb.2021.631250>
59. Benzioni A, Palzkill DA, Nelson JM. Flower bud dormancy, ABA concentration and survival during frost of jojoba genotypes under water stress. *J Am Soc Hortic Sci.* 1992;117(6):976–80. <https://doi.org/10.21273/JASHS.117.6.976>
60. Welling A. Overwintering in wood plants: involvement of ABA and dehydrins. 2003.
61. Buchanan DW, Bartholic JF, Biggs RH. Manipulation of bloom and ripening dates of three Florida grown peach and nectarine cultivars through sprinkling and shade. *J Am Soc Hortic Sci.* 1977.102(4):466–470. <https://doi.org/10.21273/JASHS.102.4.466>
62. Vara Prasad PV, Craufurd PQ, Summerfield RJ. Effect of high air and soil temperature on dry matter production, pod yield and yield components of groundnut. *Plant Soil.* 2000;222:231–9. <https://doi.org/10.1023/A:1004793220787>
63. Bhandari HR, Bhanu AN, Srivastava K, Singh MN, Shreya, Hemantaranjan A. Assessment of genetic diversity in crop plants - an overview. *Adv Plants Agric Res.* 2017;7(3):279–86. <https://doi.org/10.15406/apar.2017.07.00255>
64. Pluess AR, Schütz W, Stöcklin J. Seed weight increases with altitude in the Swiss Alps between related species but not among populations of individual species. *Oecologia.* 2005;144:55–61. <https://doi.org/10.1007/s00442-005-0047-y>
65. Khan M, Javed A, Rashid A. (A)symmetric effects of climate changes on food and crop production in Pakistan. *Qual Quant.* 2025;59:4581–605. <https://doi.org/10.1007/s11135-025-02184-w>

#### Additional information

**Peer review:** Publisher thanks Sectional Editor and the other anonymous reviewers for their contribution to the peer review of this work.

**Reprints & permissions information** is available at [https://horizonpublishing.com/journals/index.php/PST/open\\_access\\_policy](https://horizonpublishing.com/journals/index.php/PST/open_access_policy)

**Publisher's Note:** Horizon e-Publishing Group remains neutral with regard to jurisdictional claims in published maps and institutional affiliations.

**Indexing:** Plant Science Today, published by Horizon e-Publishing Group, is covered by Scopus, Web of Science, BIOSIS Previews, Clarivate Analytics, NAAS, UGC Care, etc See [https://horizonpublishing.com/journals/index.php/PST/indexing\\_abstracting](https://horizonpublishing.com/journals/index.php/PST/indexing_abstracting)

**Copyright:** © The Author(s). This is an open-access article distributed under the terms of the Creative Commons Attribution License, which permits unrestricted use, distribution and reproduction in any medium, provided the original author and source are credited (<https://creativecommons.org/licenses/by/4.0/>)

**Publisher information:** Plant Science Today is published by HORIZON e-Publishing Group with support from Empirion Publishers Private Limited, Thiruvananthapuram, India.