



RESEARCH ARTICLE

Investigation of phytochemical constituents, GC-MS, DPPH free radical scavenging assay, and mineral contents of *Glochidion sphaerogynum* (Mull. Arg.) Kurz bark extract

Priyanka Brahma & Sanjib Baruah*

Department of Botany, Bodoland University, Kokrajhar-783 370, Assam, India

*Email: sanjibbaruah9@gmail.com



ARTICLE HISTORY

Received: 23 July 2022
Accepted: 28 November 2022
Available online
Version 1.0: 11 January 2023



Additional information

Peer review: Publisher thanks Sectional Editor and the other anonymous reviewers for their contribution to the peer review of this work.

Reprints & permissions information is available at https://horizonepublishing.com/journals/index.php/PST/open_access_policy

Publisher's Note: Horizon e-Publishing Group remains neutral with regard to jurisdictional claims in published maps and institutional affiliations.

Indexing: Plant Science Today, published by Horizon e-Publishing Group, is covered by Scopus, Web of Science, BIOSIS Previews, Clarivate Analytics, NAAS etc. See https://horizonepublishing.com/journals/index.php/PST/indexing_abstracting

Copyright: © The Author(s). This is an open-access article distributed under the terms of the Creative Commons Attribution License, which permits unrestricted use, distribution and reproduction in any medium, provided the original author and source are credited (<https://creativecommons.org/licenses/by/4.0/>)

CITE THIS ARTICLE

Brahma P, Baruah S. Investigation of phytochemical constituents, GC-MS, DPPH free radical scavenging assay, and mineral contents of *Glochidion sphaerogynum* (Mull. Arg.) Kurz bark extract. Plant Science Today (Early Access). <https://doi.org/10.14719/pst.2019>

Abstract

The aim of the present study was to assess phytochemical constituents, chemical composition, DPPH free radical scavenging assay and mineral contents of *Glochidion sphaerogynum* (Mull.Arg.) Kurz bark extract. Standard procedures were used to test preliminary phytochemical constituents as well as quantitative analysis for total alkaloid, flavonoid, saponin, tannin, phenolic and terpenoid content. The extract was examined using gas chromatography-mass spectrometry (GC-MS) to know the biologically active compound. *In-vitro* antioxidant potential was investigated using DPPH free radical scavenging assay and the IC₅₀ value for the antioxidant activity of bark extract was 37.4479 µg/mL. The qualitative phytochemical investigation revealed the presence of important phytochemical constituents as well as considerable amounts of total alkaloid, flavonoid, saponin, tannin, phenolic and terpenoid content. GC-MS revealed the presence of biologically active compounds like 1,1,6-Trimethyl-3-methylene-2-(3,6,10,13,14-pentamethyl-3-ethenyl-pentadec-4-enyl)cyclohexane; Benzenepropanoic acid, 3,5-bis(1,1-dimethyl ethyl)-4-hydroxy-, methyl ester; Neophytadiene etc which would be important for medicinal industries. Mineral contents were determined by using Atomic Absorption Spectrometry (AAS). The result revealed the presence of a good concentration of Na (10.552±0.343 ppm) and Ca (8.973±0.310 ppm) elements followed by K, Fe, Mg and Mn and very less concentrations of heavy metals such as Cd, Cr and Pb indicated the species was devoid of harmful metals.

Keywords

Glochidion sphaerogynum, phytochemical, GC-MS, DPPH, mineral contents

Introduction

The Plant produces many phytochemical constituents that protect them against insects, pathogens, and herbivores (1). Many of these phytochemical constituents also have different biological activities and protect human beings against various diseases (2, 3). According to WHO (World Health Organization), 80% of people rely on indigenous plant-based medicines for curing different diseases (4). Plant produces antioxidants as secondary metabolites, which are substances that act in the cell to counteract free radicals and reactive oxygen species (ROS) and control oxidative damage in the body that become scientifically compelling compounds as a consequence of many pharmacological activities (5, 6). One of the reliable analytical methods for identifying the different chemical components in a plant sample is gas chromatography-mass spectrometry (GC-MS) which plays a significant role in the analysis of phytochemical compounds (7-9).

Glochidion sphaerogynum is a small tree belonging to the genus *Glochidion* of the family Phyllanthaceae which mainly grows in primary evergreen forests, secondary forests, hilly, or roadside areas, distributed in Bhutan, Nepal, Bangladesh, Myanmar, China, Vietnam, Thailand and states of India (10). This species can be identified by its glabrous plant body, long acuminate leaves, axillary inflorescence and distinguishable lobed capsules from other members of the genus *Glochidion*. The genus *Glochidion* contains various chemical constituents that include flavonoid, terpenoid, glycoside, steroid, phenolic compounds, triterpenoid, tannin, saponin, alkaloid, resin, anthraquinone, reducing sugar, phlobatannin and carbohydrate (11). This proves the importance of the genus as a source of medicinal value. The leaves and branches of *G. sphaerogynum* have been used mainly for the treatment of influenza, skin problems, common cold, fever, ulcers and inflammation in some countries (12-14). However, no detailed examination of the phytochemical composition, GC-MS analysis, antioxidant potential and assessment of mineral contents of this plant has been published so far. So, the present study desired to evaluate phytochemical analysis, identification of biologically active compounds using GC-MS, antioxidant potential using DPPH free radical scavenging assay and assessment of mineral contents in the bark extract of *G. sphaerogynum* based on their medicinal importance. Hence, the present study was also conducted to know the biologically active components, their mineral composition and the antioxidant capacity present in the bark extract.

Materials and Methods

Collection and identification of the plant material

The field survey was conducted from January to April 2021 and fresh plant specimens were collected in the Kokrajhar district of Assam. The plant material was identified following the literature i.e., Flora of Assam and a voucher specimen (008 BUBH) was deposited in the Bodoland University Botanical Herbarium (BUBH), Kokrajhar, Assam (15, 16).

Preparation of the plant extracts

After identification of the specimen fresh bark material was collected. The collected bark was properly washed with distilled water and dried in the shade for one and half months until it becomes completely moisture free. After drying, it was ground to a coarse powder and kept in an airtight container. Twenty gms of the powdered sample was taken and soaked in 200 mL of methanol for 72 hrs and filtered through Whatman filter paper no. 1. Then the filtrate extract was evaporated with a vacuum rotary evaporator (Ikon instruments) and set the temperature according to the boiling point of the solvent. After evaporation residue was taken and stored at 4 °C for future analysis of the sample (17, 18).

Phytochemical screening

Alkaloid, reducing sugar, steroid, phlobatannin, tannin, flavonoid, terpenoid, triterpenoid, saponin, glycoside and phenol were tested according to standard methods (18-21).

Quantitative estimation of phytochemical constituents

Total alkaloid content

2.50 g of powder bark sample was measured, and 200 mL of 10% acetic acid (CH_3COOH) in ethanol ($\text{C}_2\text{H}_5\text{OH}$) was added, followed by 4 hrs of rest. The filtrate was then heated in a water bath after filtration. Until the precipitation was complete, concentrated ammonium hydroxide (NH_4OH) was applied. It was then washed with 20 mL of 0.1M ammonium hydroxide (NH_4OH) and filtered using Whatman filter paper no. 1. The residue was dried in an oven before being weighed on an electronic balance. The total alkaloid content can be calculated using the following formula-

Alkaloid (%) = Final weight of the residue/Initial weight of sample $\times 100$ (18, 19).

Total flavonoid content

2.50 g of powder bark sample was mixed with 50 mL of 80% aqueous methanol (CH_3OH) in a 250 mL beaker, it was covered and kept at 20 °C for 24 hrs. The supernatant was discarded, and the residue was extracted 3 times more, each time with the same volume of ethanol ($\text{C}_2\text{H}_5\text{OH}$). Then, using Whatman filter paper no. 1, the entire solution was filtered. The filtrate was dried and weighed in an electronic balance after being evaporated over a water bath. Total flavonoid content can be done as-

Flavonoid (%) = Final weight of the residue/Initial weight of sample $\times 100$ (18, 19).

Total saponin content

5 g of powdered bark material was put into a 250 mL conical flask, followed by 100 mL of 20% aqueous ethanol ($\text{C}_2\text{H}_5\text{OH}$), and heated in a hot water bath for 4 hrs at 55 °C. The procedure was carried out twice more. The mixed extract was then reduced to 40 mL in a water bath at 90 °C. The mixed extract was placed in a separating funnel and rapidly shaken with 20 mL diethyl ether $\{(\text{C}_2\text{H}_5)_2\text{O}\}$. The ether layer was then removed. The purifying process was repeated 2 times. After that, 60 mL of n-butanol ($\text{C}_4\text{H}_{10}\text{O}$) was added, followed by 2 times washing with 10 mL of 5% sodium chloride (NaCl). To obtain a final concentration of saponin, the sodium chloride layer was removed and the residual solution was heated in a water bath and dried at 50 °C in an oven. Total saponin content can be done as-

Saponin (%) = Final weight of the residue/Initial weight of sample $\times 100$ (18, 19).

Total phenolic content

The total phenolic content of the methanolic bark extract was determined following the Folin Ciocalteu's (FC) method using UV-Vis Spectrophotometer (Shimadzu A 125358) with slight modification (22, 23). 0.01 g sample was weighed and made up to 1800 μL of distilled water. Then 150 μL of Folin Ciocalteu reagent and 1 mL of 10% sodium carbonate (Na_2CO_3) were added and made up to 3 mL of volume and incubated in the absence of light for 40 min. Absorbance was measured at 765 nm against a blank and the calibration curve was created using the standard gallic acid in the range of 10-50 $\mu\text{g}/\text{mL}$. Based on the average of three experiments, the phenolic content of bark extract

was quantified as mg of gallic acid equivalents of dried extract (mg GAE/g dry extract).

Total tannin content

The tannin content of the bark extract was quantified using the Folin Denis (FD) method in UV-Vis Spectrophotometer (Shimadzu A 125358) with slight modification (24-27). 0.01 g of the sample was weighed and made up of 1800 μ L of distilled water. After that, 150 mL FD reagent and 1 mL sodium carbonate (Na_2CO_3) were added to make a total volume of 3 mL, which was then incubated in the absence of light for 40 min. The calibration curve was built using tannic acid as a standard (10-50 g/mL) and calculated at the absorbance of 760 nm versus a blank. Based on the average of 3 experiments the total tannin content was quantified as mg of tannic acid equivalents of dried extract (mg TAE/g dry extract).

Total Terpenoid content

Total terpenoid content was determined as described by the given method (28, 29). For 24 hrs, 2 g of the material was dissolved with 50 ml of ethanol ($\text{C}_2\text{H}_5\text{OH}$). The mixture was then filtered using Whatman No. 1 filter paper. The filtrate was collected and extracted with petroleum ether (C_6H_{14}) before being dried at 65 $^\circ\text{C}$ in a water bath. Then the residue was collected and calculated the final volume. Total terpenoid content can be determined as-

$$\text{Terpenoid (\%)} = \frac{\text{Final weight of residue}}{\text{Initial weight of sample}} \times 100$$

GC-MS Analysis

GC-MS analysis of *G. sphaerogynum* (Mull.Arg.) Kurz bark extract was performed with a Perkin Elmer (USA) Clarus 680 GC and amp. Turbo Mass Ver. 6.1.2 instrument. The system was programmed using the software, and the peaks were examined with the NIST-2014 software. The stationary phase was 5% diphenyl 95% dimethyl polysiloxane, while the carrier gas was helium gas (99.99 %) at a flow rate of 1mL/min. A 2 μ L injection volume was used in splitless mode. The injector has a temperature of 280 $^\circ\text{C}$, whereas the ion source has a temperature of 180 $^\circ\text{C}$. Electron Impact positive (EI+) mode was used to obtain Mass Spectra at 70 eV. The mass spectrum of peaks and compounds was determined using NIST-2014 software and a library search (30).

DPPH free radical scavenging assay

The antioxidant activity of a methanolic extract of *G. sphaerogynum* bark was tested using the 2,2-Diphenyl-1-picryl-hydrazyl-hydrate (DPPH) assay with slight modification (31-34). In the absence of light, 1 mL methanolic extract solutions (10-60 $\mu\text{g}/\text{mL}$) were dissolved in 3 mL DPPH solution and incubated. 3 mL methanol was used to make the blank, and 2 mL methanol and 1 mL DPPH solution were used to make the control. With a UV-Vis spectrophotometer, the absorbance of extracts was measured at 517 nm after 30 min and compared to that of normal ascorbic acid at equal amounts. The ability of the DPPH radical scavenging assay was calculated using the following formula-

$$\% \text{ of inhibition} = \frac{(\text{Absorbance of control} - \text{Absorbance of the sample extract or standard})}{\text{Absorbance of control}} \times 100$$

The IC_{50} value was obtained using linear regression analysis. If the IC_{50} value is lower, the antioxidant activity is stronger.

Assessment of mineral contents

Atomic Absorption Spectrometry (AAS), Model: Shimadzu AA-7000, was used to determine Sodium (Na), Potassium (K), Calcium (Ca), Magnesium (Mg), Iron (Fe), Manganese (Mn), Cadmium (Cd), Chromium (Cr) and Lead (Pb) at CIF IASST, Guwahati, Assam. The material was digested with concentrated nitric acid (HNO_3) and hydrogen peroxide (H_2O_2) using the wet ashing process. 0.50 g of sample was mixed with 8 mL of HNO_3 and let to stand overnight. The following day, it was heated for 1 hr at 120 $^\circ\text{C}$ on a hot plate with 4 mL H_2O_2 until the digestion was colorless. At 80 $^\circ\text{C}$, the residue was dried and diluted with hydrochloric acid (HCl) and filtered. The results of the AAS were determined as ppm concentration based on the average of 3 readings in AAS (35).

Statistical Analysis

All the tests were done in 3 replicates. The data was determined as an average of 3 experiments ($n=3$) and calculated mean \pm standard deviation (SD) using Microsoft Excel. The statistical analysis was performed by ANOVA single factor at $p \leq 0.05$ level in Microsoft Excel.

Results

Phytochemical screening

The presence of significant secondary metabolites such as alkaloid, steroid, phlobatannin, tannin, flavonoid, terpenoid, triterpenoid, saponin, glycoside and phenol was confirmed in the methanolic bark extract of *G. sphaerogynum* (Table 1).

Table 1. Preliminary phytochemical screening of methanolic bark extract of *G. sphaerogynum*

Phytochemical constituents	Test/Reagent	Result
Alkaloid	Dragendorff's reagent	+
	Mayer's reagent	+
	Wagner's reagent	+
Reducing sugar	Fehling's test	-
Steroid	Salkowski test	+
Phlobatannin	HCl test	+
Tannin	FeCl_3 test	+
Flavonoid	FeCl_3 test	+
	H_2SO_4 test	-
Terpenoid	Salkowski test	+
Triterpenoid	H_2SO_4 test	+
Saponin	Foam test	+
Glycoside	Keller-Killiani test	-
	Borntrager's test	+
Phenol	FeCl_3 test	+

Positive sign (+) = Present; Negative sign (-) = Absent.

Quantitative estimation of phytochemical constituents

According to the result of quantitative phytochemical analysis, total alkaloid and flavonoid contents obtained 3.73% (0.093±0.025) and 1.24% (0.031±0.019) yield respectively. The total saponin content exhibited a 12.94% (0.646±0.473) yield. Total tannin and phenolic contents were 6.92112 mg TAE/g dry extract (0.744±0.062) and 0.1666 mg GAE/g dry extract (0.328±0.045) respectively. The total terpenoid content obtained was 8.66% (0.173±0.066) yield (Table 2).

Table 2. The total alkaloid, flavonoid, saponin, phenolic, tannin and terpenoid contents in methanolic bark extract of *G. sphaerogynum*

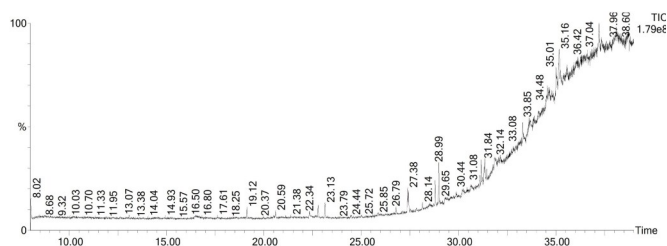
Parameters	Result
Total alkaloid content (% yield)	0.093±0.025
Total flavonoid content (% yield)	0.031±0.019
Total saponin content (% yield)	0.646±0.473
Total phenolic content (mg GAE/g)	0.328±0.045
Total tannin content (mg TAE/g)	0.744±0.062
Total terpenoid content (% yield)	0.173±0.066

Sample was analyzed in three replicates and data were indicated as an average of three tests (n=3), mean ± standard deviation (SD), and they were significantly different from each other at $p \leq 0.05$ level (ANOVA single test).

GC-MS Analysis

The bioactive compounds present in methanolic bark extracts of the *G. sphaerogynum* were shown in Fig. 1. The retention time, molecular weight, molecular formula and % of peak area were identified using the NIST library and presented in Table 3. The important bioactive compound present in the methanolic bark extract were Hentriacontane, Xanthosine, Fluorene, Phenanthrene, Neophytadiene, Benzenepropanoic acid, 3,5-bis(1,1-dimethyl ethyl)-4-hydroxy-, methyl ester, 2,6,10,14-Tetramethyl-7-(3-methylpent-4-enylidene)pentadecane, Z,Z-6,28-Heptatriacontadien-2-one, 1,1,6-Trimethyl-3-methylene-2-(3,6,10,13,14-pentamethyl-3-ethenyl-pentadec-4-enyl)cyclohexane, Methyl 2-hydroxy-eicosanoate.

Fig. 1. GC-MS chromatogram of methanolic bark extract of *G. sphaerogynum*



DPPH free radical scavenging assay

The antioxidant potential of bark extract was evaluated using the DPPH assay. DPPH free radical scavenging assay of concentrations (10-60 µg/mL) and percentage inhibition of bark extract and the standard ascorbic acid were presented in Table 4. Radical scavenging assay at the concentration of 60 µg/mL, bark extract and ascorbic acid showed inhibition of 58.503±0.095% and 71.055±0.064% respectively. The IC₅₀ value of bark extract and standard ascorbic acid were 37.4479 µg/mL and 20.9167 µg/mL respectively that indicating a good amount of antioxidant potential.

Assessment of mineral contents

The result of the mineral analysis of *G. sphaerogynum* bark extract was enlisted (Table 5). The result showed that sodium (Na) had the highest mineral contents of 10.552±0.343 ppm followed by calcium (Ca) and potassium (K) contents of 8.972±0.310 ppm and 7.230±0.086 ppm respectively. Sodium, calcium and potassium are one of the most important minerals in the body. K and Na help to maintain ionic balance, which helps to prevent hypertension and improve blood pressure (36, 37). Ca helps to maintain teeth, bone, blood clotting and muscle to contract and regulate normal heart rhythms and nerve function (38).

Discussion

The results of preliminary qualitative phytochemical screening of the methanolic extract of *G. sphaerogynum* bark showed the presence of important phytochemical constituents such as alkaloid, flavonoid, steroid, phlobatannin, tannin, terpenoid, triterpenoid, saponin, glycoside and phenol that would be implied on the identification of new sources of plants as pharmaceutical applications. The quantitative phytochemical estimation revealed a high % yield of saponin content (12.94%) followed by terpenoid content (8.66%) and a good concentration of tannin content of 6.92112 mg TAE/g dry extract (0.744±0.062) and phenolic content of 0.1666 mg GAE/g dry extract (0.328±0.045) respectively. In the present study, a good amount of alkaloids and flavonoids also have been recorded. Important biological activities such as antioxidant, anti-inflammatory, antibacterial and antimicrobial activities are known to exist in terpenoids, phenols, flavonoids, saponins, tannins and alkaloids (39).

The molecule 1,1,6-Trimethyl-3-methylene-2-(3,6,10,13,14-pentamethyl-3-ethenyl-pentadec-4-enyl)cyclohexane which is the primary compound identified as having pharmacological activities such as antimicrobial, anti-inflammatory, anticancer, antiarthritic, antiviral with the highest peak area of 2.263% followed by the compound Benzenepropanoic acid, 3,5-bis(1,1-dimethyl ethyl)-4-hydroxy-, methyl ester with the peak area of 1.091% that has antioxidant and antifungal properties found during the GC-MS analysis. From the GC-MS data, all the identified compounds possess important biologically active compounds such as antioxidants, antitumor, antimicrobial, anti-inflammatory, antifungal, cytotoxic and various pharmacological activities which creates a basis for defining the plant's potential benefits in medicinal industries (Table 3).

The DPPH free radical scavenging assay was used to examine antioxidant activity. The result showed that the concentrations of methanolic bark extracts had significant DPPH free radical scavenging effects. The highest % inhibition (59.512±0.557) showed in 50 µg/mL followed by 58.503±0.095 % inhibition in 60 µg/mL with a potent antioxidant amount of IC₅₀ value. Further assays are required to know the significance of the antioxidant capacities of the extract.

Table 3. Identified chemical composition of methanolic bark extract of *G. sphaerogynum* using GC-MS and their biological activity

Sl. No.	Retention time	Compound name	Peak area %	Molecular weight	Molecular formula	Biological activity
1	19.123	Hentriacontane	0.249	436	C ₃₁ H ₆₄	Anti-inflammatory, antitumor and antimicrobial activities (44)
2	20.588	Xanthosine	0.247	284	C ₁₀ H ₁₂ N ₄ O ₆	Therapeutic and pharmacological property (45)
3	23.139	Fluorene	0.473	166	C ₁₃ H ₁₀	Drug design (46)
4	27.381	Phenanthrene	0.608	178	C ₁₄ H ₁₀	Analgesic, antitussive, antimalarial, cytotoxic, anti-constipation, antioxidant, anti-inflammatory activity (47)
5	28.141	Neophytadiene	0.229	530	C ₂₀ H ₃₈	Anti-inflammatory, antipyretic, analgesic, antioxidant, antimicrobial, antifungal, antibacterial activity (48-52)
6	28.987	Benzenepropanoic acid, 3,5-bis(1,1-dimethyl ethyl)-4-hydroxy-, methyl ester	1.091	292	C ₁₈ H ₂₆ O ₃	Antioxidant, antifungal (53-56)
7	31.848	2,6,10,14-Tetramethyl-7-(3-methylpent-4-enylidene) pentadecane	0.468	348	C ₂₅ H ₄₈	Anti-inflammatory, Antioxidant (57)
8	33.849	Z,Z-6,28-Heptatriacontadien-2-one	0.751	530	C ₃₇ H ₇₀ O	Vasodilatory, carcinogenic, antioxidant activity (58, 59)
9	35.174	1,1,6-Trimethyl-3-methylene-2-(3,6,10,13,14-pentamethyl-3-ethenyl-pentadec-4-enyl) cyclohexane	2.263	442	C ₃₂ H ₅₈	Pharmacological activity, antimicrobial, anticancer, antiarthritic, anti-inflammatory and antiviral properties (60, 61)
10	37.955	Methyl 2-hydroxy-eicosanoate	0.275	342	C ₂₁ H ₄₂ O ₃	Pharmaceutical property, antioxidant, anti-inflammatory (62, 63)

Table 4. DPPH assay of methanolic bark extract of *G. sphaerogynum*

Concentration (µg/mL)	% inhibition	
	Bark extract	Ascorbic acid
10	38.272±1.165	41.767±0.641
20	44.080±0.586	59.143±0.109
30	42.013±1.190	56.091±0.461
40	51.070±0.794	62.072±0.346
50	59.512±0.557	65.985±0.031
60	58.503±0.095	71.055±0.064
IC ₅₀ (µg/mL)	37.4479	20.9167

The sample was analyzed in three replicates and data were indicated as an average of three tests (n=3), mean ± standard deviation (SD) and they were significantly different from each other at $p \leq 0.05$ level (ANOVA single test)

In order to be healthy, the human body requires a variety of minerals found in different varieties of plants. Apart from this, plants possess minerals that are beneficial for humans and some toxic metals which are harmful to human health. The presence of heavy metal toxicity in plants may create severe problems. The determination of mineral composition showed the highest concentration in sodium (Na) elements followed by calcium (Ca), potassium (K), iron (Fe), magnesium (Mg), manganese (Mn), and less concentration of chromium (Cr), lead (Pb) and cadmium (Cd). Na maintains the osmotic pressure in the body and activates nerves and muscle functions (40). K and Na maintain the ionic equilibrium that helps to prevent hypertension and enhances blood pressure (36, 37). Mg is important for enzyme activation and bone formation and Ca plays an important role as a constituent of bones and teeth formations, regulation of nerves and muscles functions in living cells and helps in membrane formulating (40). Fe is

Table 5. Mineral assessment of bark of *G. sphaerogynum*

Minerals	Result (ppm)
Sodium (Na)	10.552±0.343
Potassium (K)	7.230±0.086
Calcium (Ca)	8.973±0.310
Magnesium (Mg)	3.379±0.167
Iron (Fe)	4.026±0.076
Manganese (Mn)	3.367±0.179
Chromium (Cr)	0.162±0.011
Lead (Pb)	0.162±0.016
Cadmium (Cd)	0.009±0.002

The sample was analyzed in three replicates and data were indicated as an average of three tests (n=3), mean ± standard deviation (SD), and they were significantly different from each other at $p \leq 0.05$ level (ANOVA single test)

linked to haemoglobin and oxygen transmission from the lungs to tissue cells. Mn activates enzymes and is involved in urea formation, haemoglobin formation, helping in the nervous system and normal bone growth (37, 41, 42). Cd, Pb and Cr are non-essential elements in both plants and humans if it consists of high concentration. They are responsible for toxic substances (43). Plants are a good source of phytochemicals and minerals that can be useful for the nutraceutical industry. Several investigations have found elemental content in plant extracts that we consume as herbal health supplements or medicine and biochemical processes in the human body are affected by macro and trace elements (36, 37, 41). Therefore, it was evident from the results that the plants would be free of harmful materials because of the very low concentration of Cr, Pb, and Cd and could be important mineral consuming plants due to the presence of the important mineral elements.

Conclusion

The study revealed that plant has a potential source of phytochemical constituents that would be beneficial to humankind. The GC-MS analysis justifies the presence of important biological and pharmacological properties such as antifungal, antibacterial, antioxidant, antimicrobial, anti-inflammatory, antimalarial, analgesic and cytotoxic activities). This study can serve as a basis for additional research on the biological activities of the plant. The DPPH assay of bark extract exhibited a good amount of antioxidant compound which could be useful in the pharmaceutical and medicinal industry. Mineral determination indicated the presence of a significant number of mineral factors such as sodium (Na), calcium (Ca), potassium (K), iron (Fe), magnesium (Mg), manganese (Mn) and the plant could be free from toxic substances due to less concentration of heavy metal such as Cadmium (Cd), Chromium (Cr) and Lead (Pb). This is the first report citing mineral contents and detailed phytochemical evaluation, GC-MS and antioxidant analysis of the *G. sphaerogynum*. Further studies are needed to isolate biologically active compounds as important in pharmacological industries.

Acknowledgements

The authors would like to extend their sincerity to the Assam State Biodiversity Board (ASBB) for allowing us to collect specimens in the study area. The authors would like to express their gratitude to the head of the Department of Botany and the Department of Biotechnology at Bodoland University, Kokrajhar for providing the necessary facilities for this research. The first author wants to thank the University Grants Commission for the National Fellowship and Scholarship for Higher Education of ST Students (NFST) scheme (Award No. 202021-NFST-ASS-01128) and the Government of India, Ministry of Tribal Affairs, Scholarship Division for financial assistance with her Ph.D. The authors would also like to thank Biotech Park, IIT Guwahati for providing the GC-MS facility and CIF IASST, Guwahati, Assam for providing the AAS facility.

Authors contributions

PB collected and identified the specimen, analyzed the data, performed the statistical analysis and drafted the manuscript. SB participated in the design of the study, supervised the work and revised the manuscript. Both authors read and approved the final manuscript.

Compliance with ethical standards

Conflict of interest: Authors do not have any conflict of interest to declare.

Ethical issues: None.

References

1. Taiz L, Zeiger E. Plant Physiology. 3rd ed. Sunderland: Sinauer Associates; 2002.
2. Ghasemzadeh A, Jaafar HZ, Rahmat A. Phytochemical constituents and biological activities of different extracts of *Strobilanthes crispus* (L.) Bremek leaves grown in different locations of Malaysia. BMC Complement Altern Med. 2015; 15(1):422. <https://doi.org/10.1186/s12906-015-0873-3>
3. Khan IH, Javaid A. Anticancer, antimicrobial and antioxidant compounds of quinoa inflorescence. Adv Life Sci. 2020; 8(1):68-72.
4. WHO, IUCN, WWF. Guidelines on the conservation of medicinal plants. Switzerland; 1993.
5. Zehiroglu C, Ozturk Sarikaya SB. The importance of antioxidants and place in today's scientific and technological studies. J Food Sci Technol. 2019; 56(11):4757-74. <https://doi.org/10.1007/s13197-019-03952-x>
6. Khan IH, Javaid A. Antifungal, antibacterial and antioxidant components of ethyl acetate extract of quinoa stem. Plant Prot. 2019; 3(3):125-30. <http://dx.doi.org/10.33804/pp.003.03.3109>
7. Khan IH, Javaid A, Ahmed D, Khan U. Identification of volatile constituents of ethyl acetate fraction of *Chenopodium quinoa* roots extract by GC-MS. Int J Biol Biotechnol. 2020; 17(1):17-21.
8. Olivia NU, Goodness UC, Obinna OM. Phytochemical profiling and GC-MS analysis of aqueous methanol fraction of *Hibiscus asper* leaves. Future J Pharm Sci. 2021;7:59. <https://doi.org/10.1186/s43094-021-00208-4>
9. Ferdosi MFH, Khan IH, Javaid A, Fardosi MFA. GC-MS examination of methanolic extract of *Cirsium arvense* flower. Pak J Weed Sci Res. 2021;27(2):173-80. <https://doi.org/10.28941/pjwsr.v27i2.946>
10. Chakrabarty T, Balakrishnan NP. Indo-Burmese Phyllanthaceae: A Taxonomic Revision. Dehradun, India; 2018.
11. Sandhya S, Chaintanya RSNACK, Vinod KR, Rao KNV, David B, Sudhakar K, Swetha R. An updated review on the Genus *Glochidion* Plant. Arch Appl Sci Res. 2010;2(2):309-22.
12. Bajpai O, Kumar A, Srivastava AK, Kuhwaha AK, Pandey J, Chaudhary LB. Tree species of Himalayan Terai region of Uttar Pradesh, India: a checklist. Check List. 2015;11(4):1-15. <https://doi.org/10.15560/11.4.1718>
13. Lai XZ, Yang YB, Shan XL. The investigation of Euphorbiaceae medicinal plants in Southern China. Econ Bot. 2004; 58:S307-S320. [https://doi.org/10.1663/0013-0001\(2004\)58\[S307:TIOEMP\]2.0.CO;2](https://doi.org/10.1663/0013-0001(2004)58[S307:TIOEMP]2.0.CO;2)
14. Lalrinkimi, Lallianthanga RK. Documentation of tree species within Mizoram Science Centre, Berawtlang, Aizawl, India with notes on their ethnomedicinal values. Sci Vision. 2019;19(3):63-78. <http://dx.doi.org/10.33493/scivis.19.03.01>
15. Kanjilal UN, Kanjilal PC, Dey RN, Das A. Flora of Assam. vol-4. Calcutta; 1940.
16. Jain SK, Rao RR. A Handbook of Field and Herbarium Methods. New Delhi: India; 1977.
17. Khan IH, Javaid A. Antifungal activity of leaf extract of *Cannabis sativa* against *Aspergillus flavipes*. Pak J Weed Sci Res 2020; 26(4):447-53. <http://dx.doi.org/10.28941/pjwsr.v26i4.883>
18. Harborne JB. Phytochemical Methods, A Guide to Modern Techniques of Plant Analysis. London; 1973. https://doi.org/10.1007/978-94-009-5921-7_1
19. Ogunjobi KM, Abdulwahab SO, Gakenou OF, Thompson OE, Olorunfemi O. Qualitative and quantitative evaluation of the phytochemical constituents of three wood species in Ogun state, Nigeria. Trop Plant Res. 2020; 7(3):627-33. <http://dx.doi.org/10.22271/tpr.2020.v7.i3.078>
20. Raaman N. Phytochemical Techniques. New Delhi: India; 2006.
21. Tripathi IP, Mishra C. Phytochemical screening of some medicinal plants of Chitrakoot region. Indian J Appl Res. 2015;5(12):56-60. <https://doi.org/10.3126/sw.v1i12.13598>
22. Chethana KR, Sasidhar BS, Naika M, Keri RS. Phytochemical

- composition of *Caesalpinia crista* extract as potential source for inhibiting cholinesterase and β -amyloid aggregation: Significance to Alzheimer's disease. *Asian Pac J Trop Biomed.* 2018; 8(10):500-12. <https://doi.org/4103/2221-1691.244159>
23. Jamuna S, Subramaniam P, Krishnamoorthy K. Phytochemical analysis and evaluation of leaf and root parts of the medicinal herb, *Hypochoeris radicata* L. for *in vitro* antioxidant activities. *Asian Pac J Trop Biomed.* 2014; 4(Suppl1):S359-S367. <https://doi.org/10.12980/apjtb.4.2014c1030>
 24. Padma R, Parvathy NG, Renjith V, Kalpana PR. Quantitative estimation of tannins, phenols and antioxidant activity of methanolic extract of *Imperata cylindrica*. *Int J Res Pharm Sci.* 2013;4(1):73-77.
 25. Polshettiwar SA, Ganjiwale RO. Spectrophotometric estimation of total tannins in some ayurvedic eye drops. *Indian J Pharm Sci.* 2007; 69(4):574-76. <http://dx.doi.org/10.4103/0250-474X.36949>
 26. Saxena V, Mishra G, Saxena A, Kamlesh KR, Vishwakarma. A comparative study on quantitative estimation of tannins in *Terminalia chebula*, *Terminalia bellerica*, *Terminalia arjuna* and *Saraca indica* using spectrophotometer. *Asian J Pharm Clin Res.* 2013; 6(7):148-49.
 27. Soni V, Jha AK, Dwivedi J, Soni P. Qualitative and quantitative determination of phytoconstituents in some antifertility herbs. *Indian J Pharm Sci.* 2018; 80(1):79-84. <http://dx.doi.org/10.4172/pharmaceutical-sciences.1000332>
 28. Ferguson NM. A textbook of pharmacognosy. New York: Max Millam Company; 1956.
 29. Kong HS, Musa KH, Mohd-Kasim Z, Abdullah Sani N. Qualitative and quantitative phytochemical analysis and antioxidant properties of leaves and stems of *Clinacanthus nutans* (Burm. f.) Lindau from two herbal farms of Negeri Sembilan, Malaysia. *ASM Sc. J.* 2019;12:1-13. <http://dx.doi.org/10.32802/asmscj.2019.87>
 30. Casuga FP, Castillo AL, Corpuz MJAT. GC-MS analysis of bioactive compounds in different extracts of an endemic plant *Broussonetia luzonica* (Blanco) (Moraceae) leaves. *Asian Pac J Trop Biomed.* 2016;6(11):957-61. <https://doi.org/10.1016/j.apjtb.2016.08.015>
 31. Islary A, Sarmah J, Basumatary S. Proximate composition, mineral content, phytochemical analysis and *in vitro* antioxidant activities of a wild edible fruit (*Grewia sapida* Roxb. ex DC.) found in Assam of North-East India. *J Investig Biochem.* 2016;5(1):21-31. <http://dx.doi.org/10.5455/jib.20160422015354>
 32. Islary A, Sarmah J, Basumatary S. Nutritional properties, phytochemicals and *in vitro* antioxidant assessment of two wild edible fruits from Assam of North-East India. *J Pharm Nutr Sci.* 2017; 7(2):55-63. <http://dx.doi.org/10.6000/1927-5951.2017.07.02.4>
 33. Narzary H, Islary A, Basumatary S. Phytochemicals and antioxidant properties of eleven wild edible plants from Assam, India. *Mediterr J Nutr Metab.* 2016; 9(3):191-201. <http://dx.doi.org/10.3233/MNM-161116>
 34. Shukla RK, Painuly D, Porval A, Shukla A. Proximate analysis, nutritional value, phytochemical evaluation, and biological activity of *Litchi chinensis* Sonn. leaves. *J Herbs Spices Med Plants.* 2014; 20:196-208. <http://dx.doi.org/10.1080/10496475.2013.848830>
 35. Pequerul A, Perez C, Madero P, Val J, Monge E. A rapid wet digestion method for plant analysis. 1993. http://dx.doi.org/10.1007/978-94-017-2496-8_1
 36. Radha, Kumar M, Puri S, Pundir A, Bangar SP, Changan S et al. Evaluation of nutritional, phytochemical and mineral composition of selected medicinal plants for therapeutic uses from cold desert of Western Himalaya. *Plants (Basel).* 2021;10(7):1429. <https://doi.org/10.3390/plants10071429>
 37. Tapan Seal. Determination of nutritive value, mineral contents and antioxidant activity of some wild edible plants from Meghalaya State, India. *Asian J Applied Sci.* 2011;4(3):238-46. <https://doi.org/10.3923/ajaps.2011.238.246>
 38. Thomas RA, Krishnakumari S. Proximate analysis and mineral composition of *Myristica fragrans* seeds. *J Pharmacogn Phytochem.* 2015;3(6):39-42.
 39. Kabir S, Zahan R, Chowdhury AMS, Rashid MA, Haque MR, Hasan CM. Evaluation of antioxidant, antitumor, analgesic and anti-inflammatory activities of *Glochidion lanceolarium* (Roxb.) Voigt. *J Sci Found.* 2020;18(2):72-80. <https://doi.org/10.3329/jsf.v18i2.52781>
 40. Paul SH, Usman AA, Gana IN, Manase A, Adeniyi OD, Olutoye MA. Comparative study of mineral and nutritional composition of a multifunctional flora composite formulated from seven medicinal plants and their applications to human health. *Eng Technol Open Acc.* 2018; 1(5):555572. <https://doi.org/10.19080/etoaj.2018.01.555572>
 41. Saupi N, Zakaria MH, Bujang JS. Analytic chemical composition and mineral content of yellow velvet leaf (*Limnnocharis flava* L. Buchenau)'s edible parts. *J Appl Sci.* 2009;9:2969-74. <https://dx.doi.org/10.3923/jas.2009.2969.2974>
 42. Liang P, Sang H, Sun Z. Cloud point extraction and graphite furnace atomic absorption spectrometry determination of manganese (II) and iron (III) in water samples. *J Colloid Interface Sci.* 2006;304:486-90. <https://doi.org/10.1016/j.jcis.2006.09.006>
 43. Behera B, Bhattacharya S. The importance of assessing heavy metals in medicinal herbs: A quantitative study. *Tang [Humanitas Medicine].* 2016;6(1):3.1-3.4. <https://doi.org/10.5667/tang.2015.0029>
 44. Khajuria V, Gupta S, Sharma N, Kumar A, Lone NA, Khullar M et al. Anti-inflammatory potential of hentriacontane in LPS stimulated RAW 264.7 cells and mice model. *Biomed Pharmacother.* 2017;92:175-86. <https://doi.org/10.1016/j.biopha.2017.05.063>
 45. Kulikowska E, Kierdaszuk B, Shugar D. Xanthine, xanthosine and its nucleotides: solution structures of neutral and ionic forms and relevance to substrate properties in various enzyme systems and metabolic pathways. *Acta Biochim Pol.* 2004; 51(2):493-531. http://dx.doi.org/10.18388/abp.2004_3587
 46. Gillis EP, Eastman KJ, Hill MD, Donnelly DJ, Meanwell NA. Applications of Fluorine in Medicinal Chemistry. *J Med Chem.* 2015; 58(21):8315-59. <https://doi.org/10.1021/acs.jmedchem.5b00258>
 47. Kwofie MA, Gupta M. Phenanthrene: A versatile molecule; A review. *Plant Archives.* 2021; 21(1). <http://dx.doi.org/10.51470/PLANTARCHIVES.2021.v21.no1.051>
 48. Adnan M, Nazim Uddin Chy M, Mostafa Kamal ATM, Azad MOK, Paul A, Uddin SB et al. Investigation of the biological activities and characterization of bioactive constituents of *Ophiorrhiza rugosa* var. *prostrata* (D.Don) & Mondal leaves through *in vivo*, *in vitro* and *in silico* approaches. *Molecules.* 2019; 24(7):1367. <https://doi.org/10.3390/molecules24071367>
 49. Ceyhan-Güvensesen N, Keskin D. Chemical content and antimicrobial properties of three different extracts of *Mentha pulegium* leaves from Mugla Region, Turkey. *J Environ Biol.* 2016;37(6):1341-46.
 50. Singh R, Dar SA, Sharma P. Antibacterial activity and toxicological evaluation of semi purified hexane extract of *Urtica dioica* leaves. *Res J Med Plant.* 2012;6:123-35. <https://doi.org/10.3923/RJMP.2012.123.135>
 51. Venkata Raman B, La S, Saradhi PM, Rao N, Krishna NV, Sudhakar M, Tm R. Antibacterial, antioxidant activity and GC-MS analysis of *Eupatorium odoratum*. *Asian J Pharm Clin Res.* 2012;5(2):99-106.
 52. Ozie Akbar Pratama, Woro Anindito Sri Tunjung, Sutikno Sutikno, Budi Setiadi Daryono. Bioactive compound profile of melon leaf extract (*Cucumis melo* L. 'Hikapel') infected by downy mildew. *Biodiversitas.* 2019;20(11):3448-53. <https://doi.org/10.13057/biodiv/d201143>
 53. Gogoi D, Bora G, Borgohain R, G Handique J. Antioxidant capacity and GC-MS analysis of hexane, ethylacetate and methanol extracts of *Ficus bhotanica* - A potential folklore medicinal plant. *Int J Pharmacogn Phytochem Res.* 2018;10(5):201-12. <https://doi.org/10.25258/phyto.10.5.5>
 54. Akpuaka A, Ekwenchi MM, Dashak DA, Ahmed D. Biological activities of characterized isolates of n-hexane extract of *Azadirachta indica* A. Juss (Neem) leaves. *N Y Sci J.* 2013;6(6):119-24. <http://www.sciencepub.net/newyork>
 55. Kumar V, Sharma A, Thukral A, Bhardwaj R. Phytochemical profiling of methanolic extracts of medicinal plants using GC-

- MS. *Phytochemistry*. 2016;5(3):2153-58.
56. Bashir A, Khan I, Bashir S, Azam S. Chemical composition and antifungal, phytotoxic, brine shrimp cytotoxicity, insecticidal and antibacterial activities of the essential oils of *Acacia modesta*. *J Med Plants Res*. 2012;6(31):4653-59. <http://dx.doi.org/10.5897/JMPR12.016>
 57. Marchioni I, Najar B, Ruffoni B, Copetta A, Pistelli L, Pistelli L. Bioactive compounds and aroma profile of some Lamiaceae edible flowers. *Plants (Basel)*. 2020;9(6):691. <https://doi.org/10.3390/plants9060691>
 58. Mallikadevi T, Paulsamy S, Jamuna S, Karthika K. Analysis for phytochemicals and bioinformatics approach for the evaluation of therapeutic properties of whole plant methanolic extract of *Mukia mada-raspatana*—A traditional medicinal plant in western districts of Tamil Nadu, India. *Asian J Pharm Clin Res*. 2012;5(4):163-68.
 59. Ralte L, Khiangte L, Thangjam NM, Kumar A, Singh YT. GC-MS and molecular docking analyses of phytochemicals from the underutilized plant, *Parkia timoriana* revealed candidate anti-cancerous and anti-inflammatory agents. *Sci Rep*. 2022;12:3395. <https://doi.org/10.1038/s41598-022-07320-2>
 60. Painuli S, Rai N, Kumar N. GC-MS analysis of methanolic extract of leaves of *Rhododendron arboreum*. *Asian J Pharm Clin Res*. 2016;9(1):101-04.
 61. Rawat P, Bachheti RK, Kumar N, Rai N. Phytochemical analysis and evaluation of *in vitro* immunomodulatory activity of *Rhododendron arboreum* leaves. *Asian J Pharm Clin Res*. 2018;11(8):123-28. <https://doi.org/10.22159/ajpcr.2018.v11i8.25372>
 62. Ponnudurai G, Peter Paul J. GC-MS analysis of methanolic extract of *Colpomenia sinuosa* (Mertens ex Roth) Derb. Et Sol. from Manapad in the South East Coast of Tamil Nadu, India. *Asian J Pharm Res Dev*. 2020;8(4):41-43. <https://doi.org/10.22270/ajprd.v8i4.761>
 63. Das M, Malipeddi H. Phytochemical screening, GC-MS analysis and biological activity of *Ipomoea eriocarpa* leaf extracts. *Int J Pharm Pharm Sci*. 2014;6(4):592-94.

§§§