

Supplementary Figure

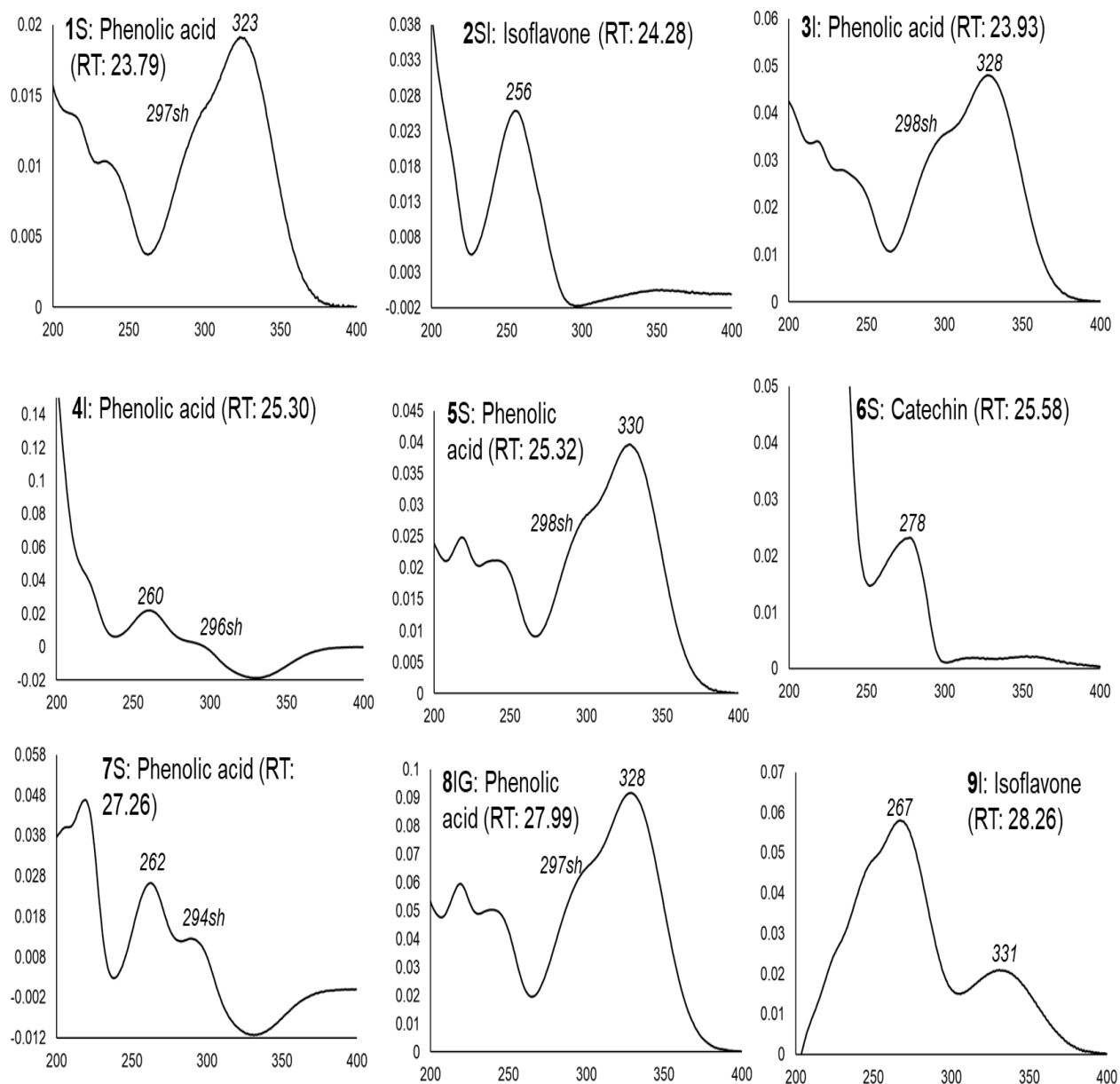


Fig. S1. UV spectra of the phenolic compounds found in the seeds, soaked seeds and sprouts of eight wild forms and eight varieties of common bean (*Phaseolus vulgaris*).
S: Accumulated in seeds, **I:** Accumulated in soaked seeds, **G:** Accumulated in sprouts.

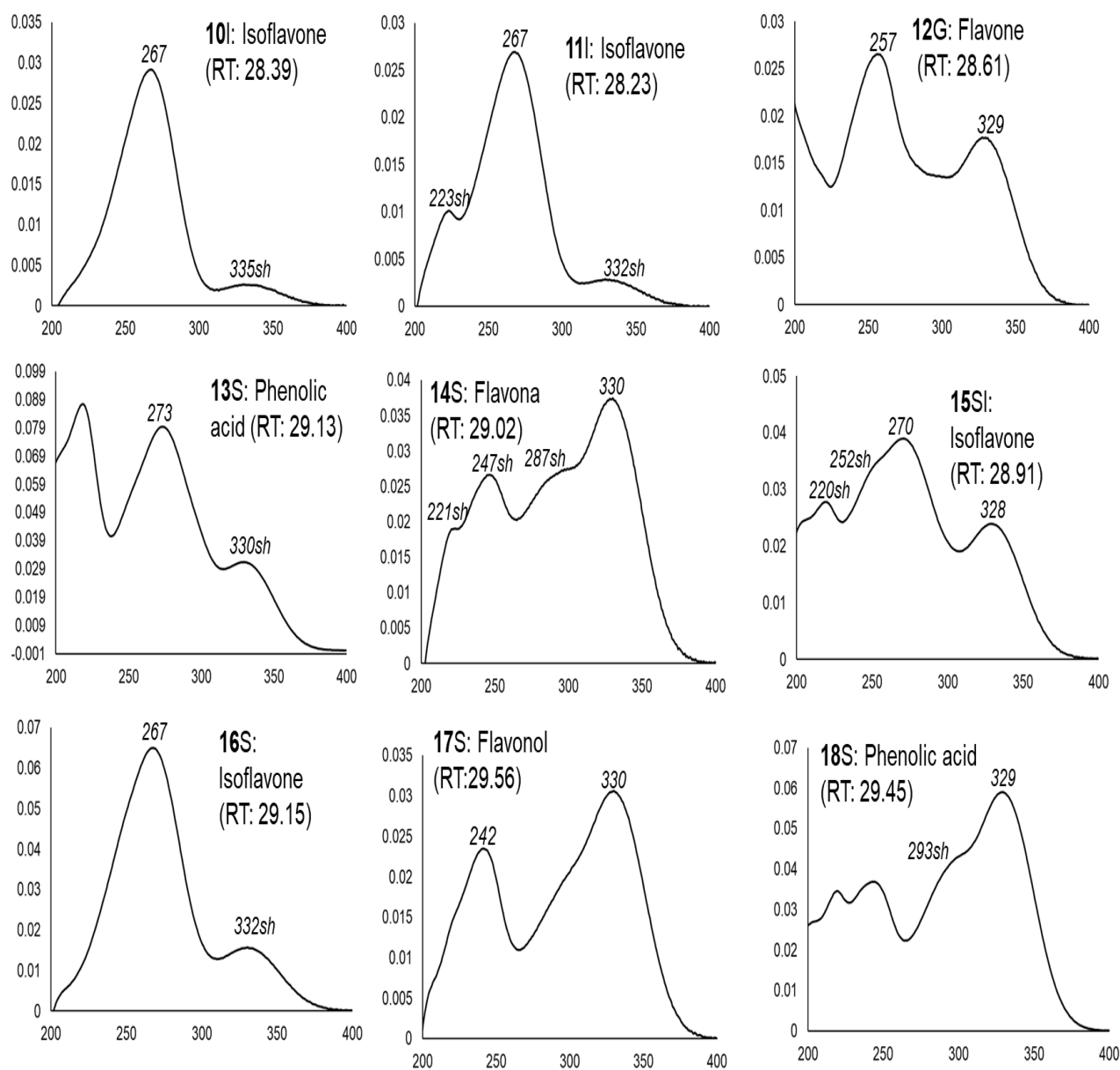


Fig. S1 *cont.* UV spectra of the phenolic compounds found in the seeds, soaked seeds and sprouts of eight wild forms and eight varieties of common bean (*Phaseolus vulgaris*). S: Accumulated in seeds, I: Accumulated in soaked seeds, G: Accumulated in sprouts.

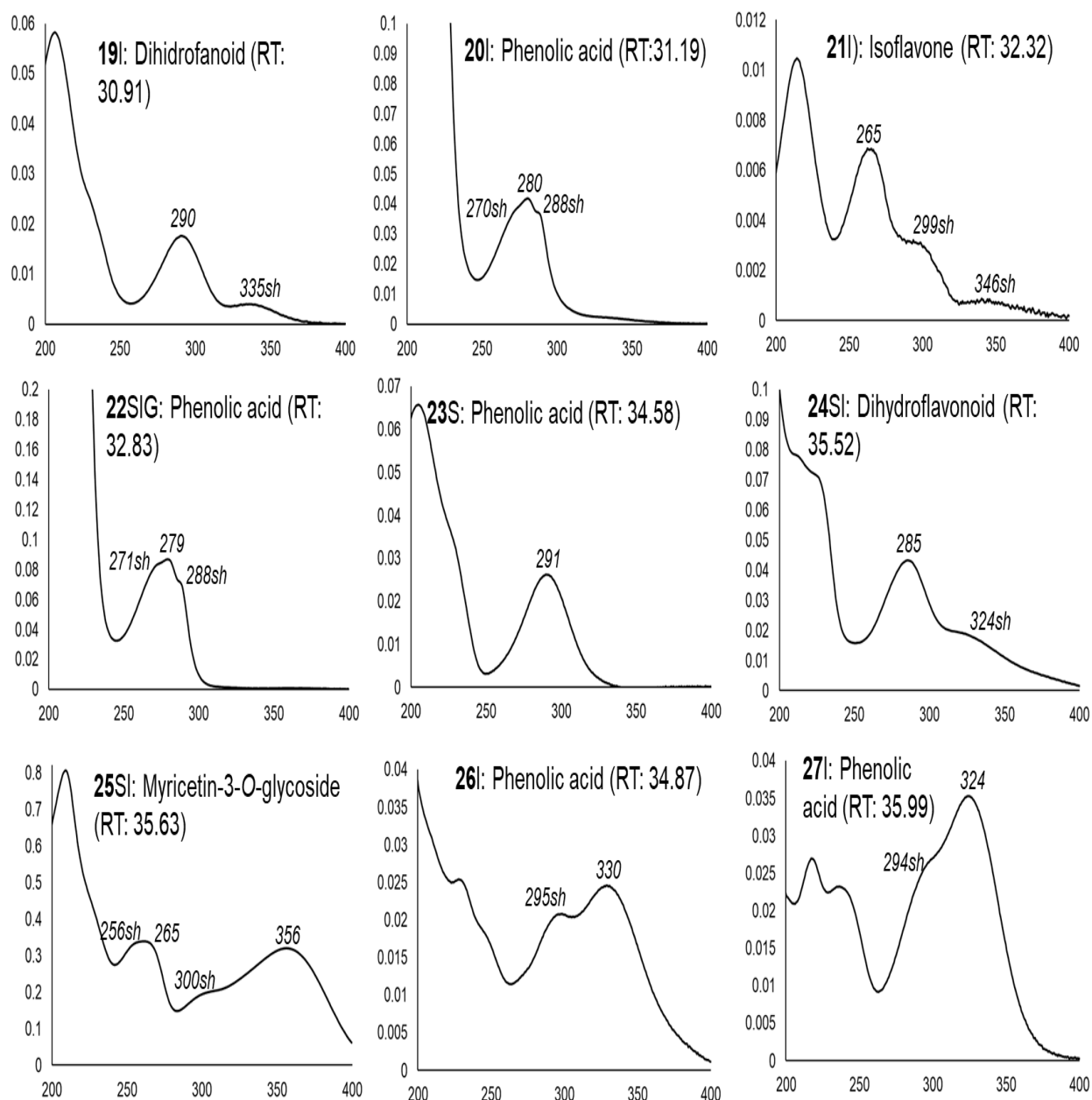


Fig. S1 *cont.* UV spectra of the phenolic compounds found in the seeds, soaked seeds and sprouts of eight wild forms and eight varieties of common bean (*Phaseolus vulgaris*). S: Accumulated in seeds, I: Accumulated in soaked seeds, G: Accumulated in sprouts.

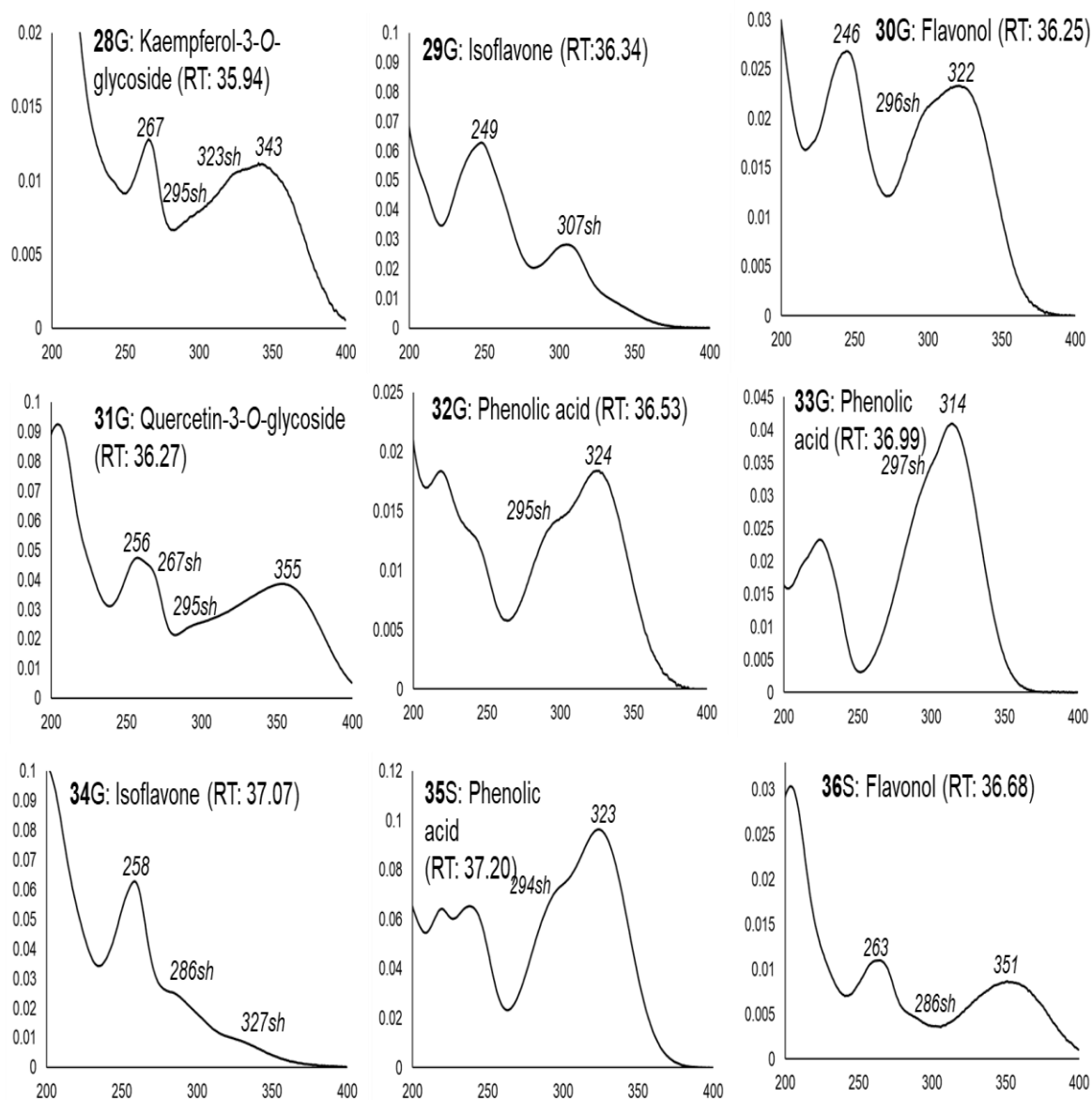


Fig. S1 *cont.* UV spectra of the phenolic compounds found in the seeds, soaked seeds and sprouts of eight wild forms and eight varieties of common bean (*Phaseolus vulgaris*). S: Accumulated in seeds, I: Accumulated in soaked seeds, G: Accumulated in sprouts.

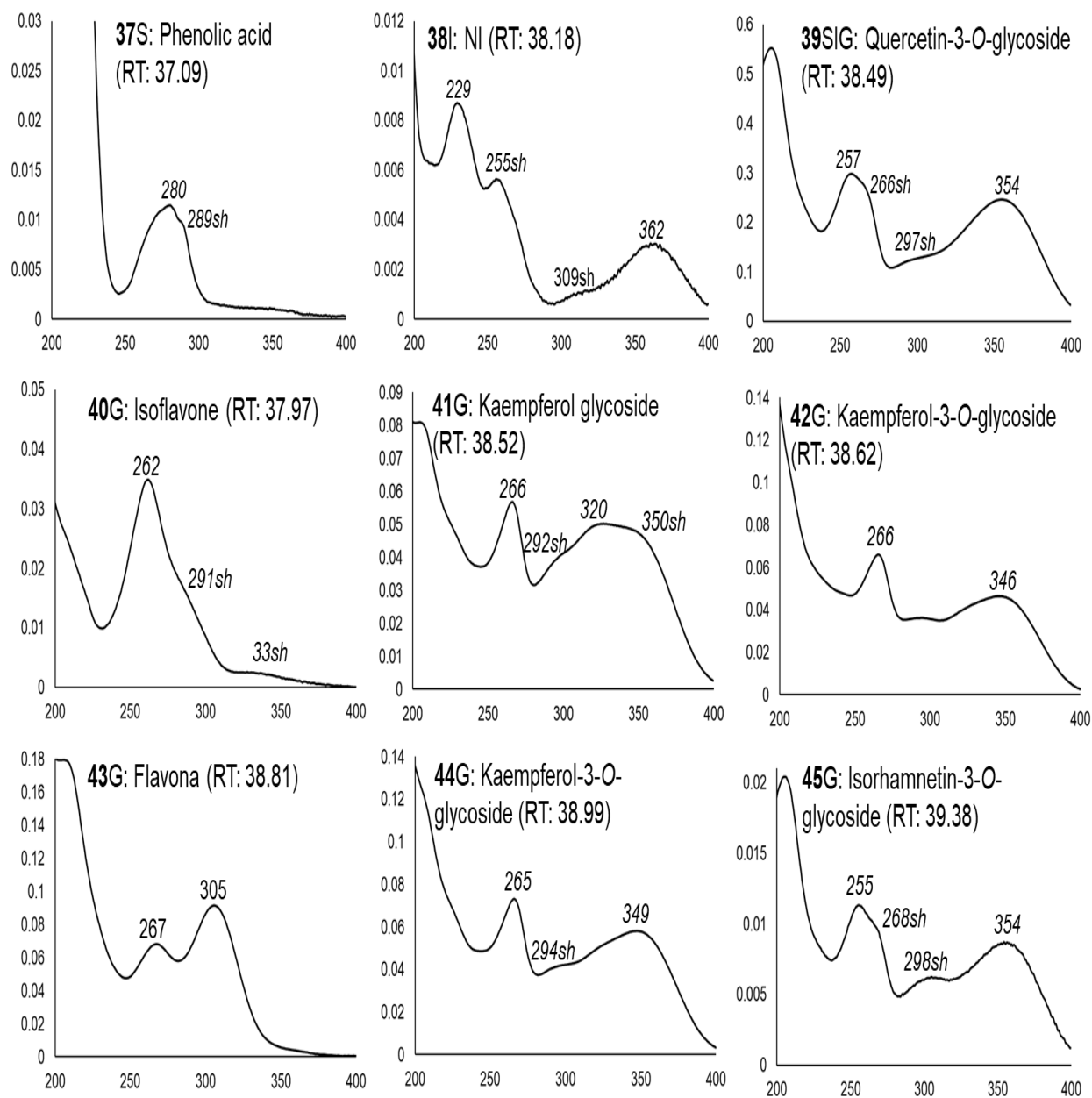


Fig. S1 *cont.* UV spectra of the phenolic compounds found in the seeds, soaked seeds and sprouts of eight wild forms and eight varieties of common bean (*Phaseolus vulgaris*). S: Accumulated in seeds, I: Accumulated in soaked seeds, G: Accumulated in sprouts.

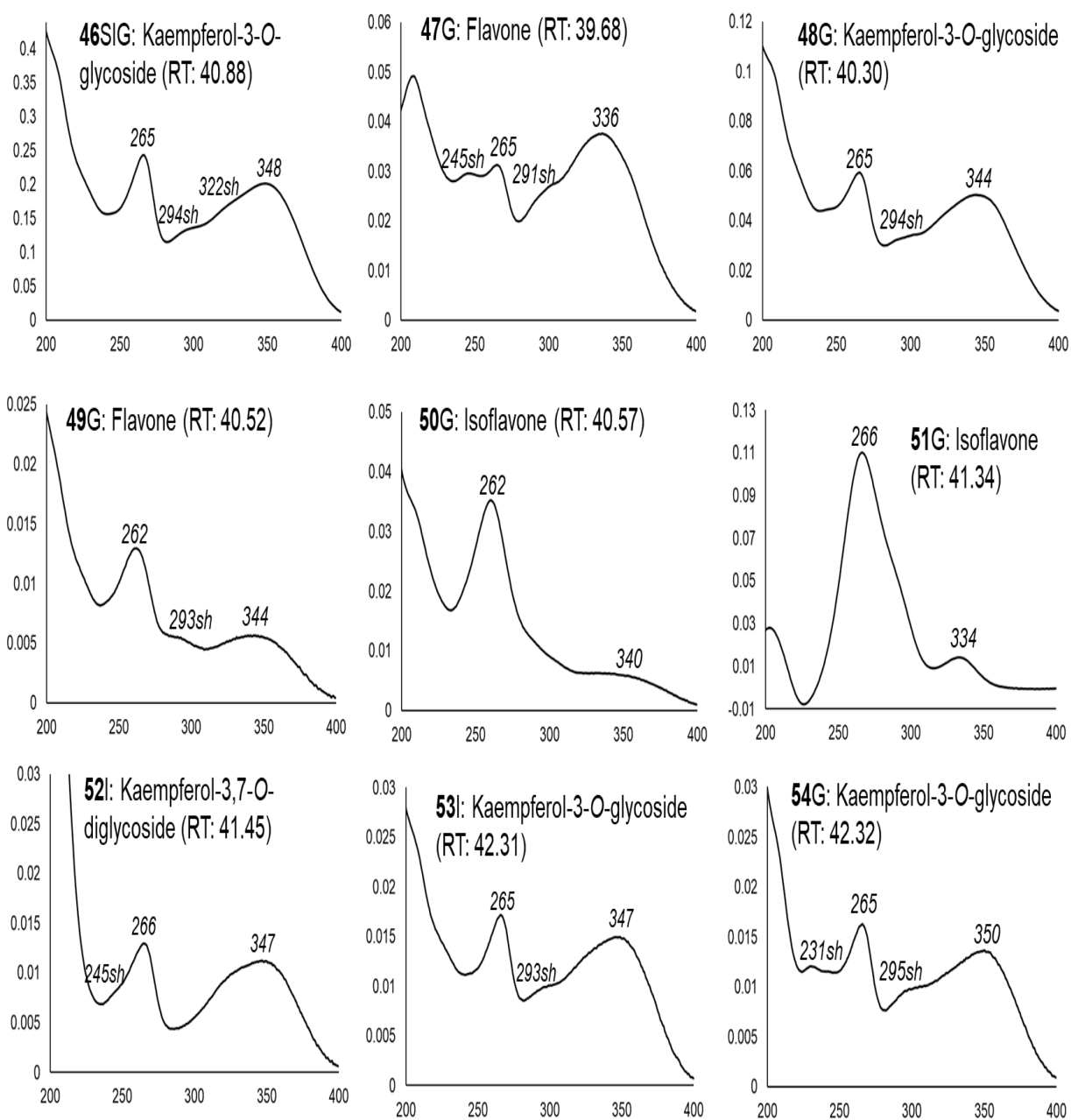


Fig. S1 *cont.* UV spectra of the phenolic compounds found in the seeds, soaked seeds and sprouts of eight wild forms and eight varieties of common bean (*Phaseolus vulgaris*). S: Accumulated in seeds, I: Accumulated in soaked seeds, G: Accumulated in sprouts.

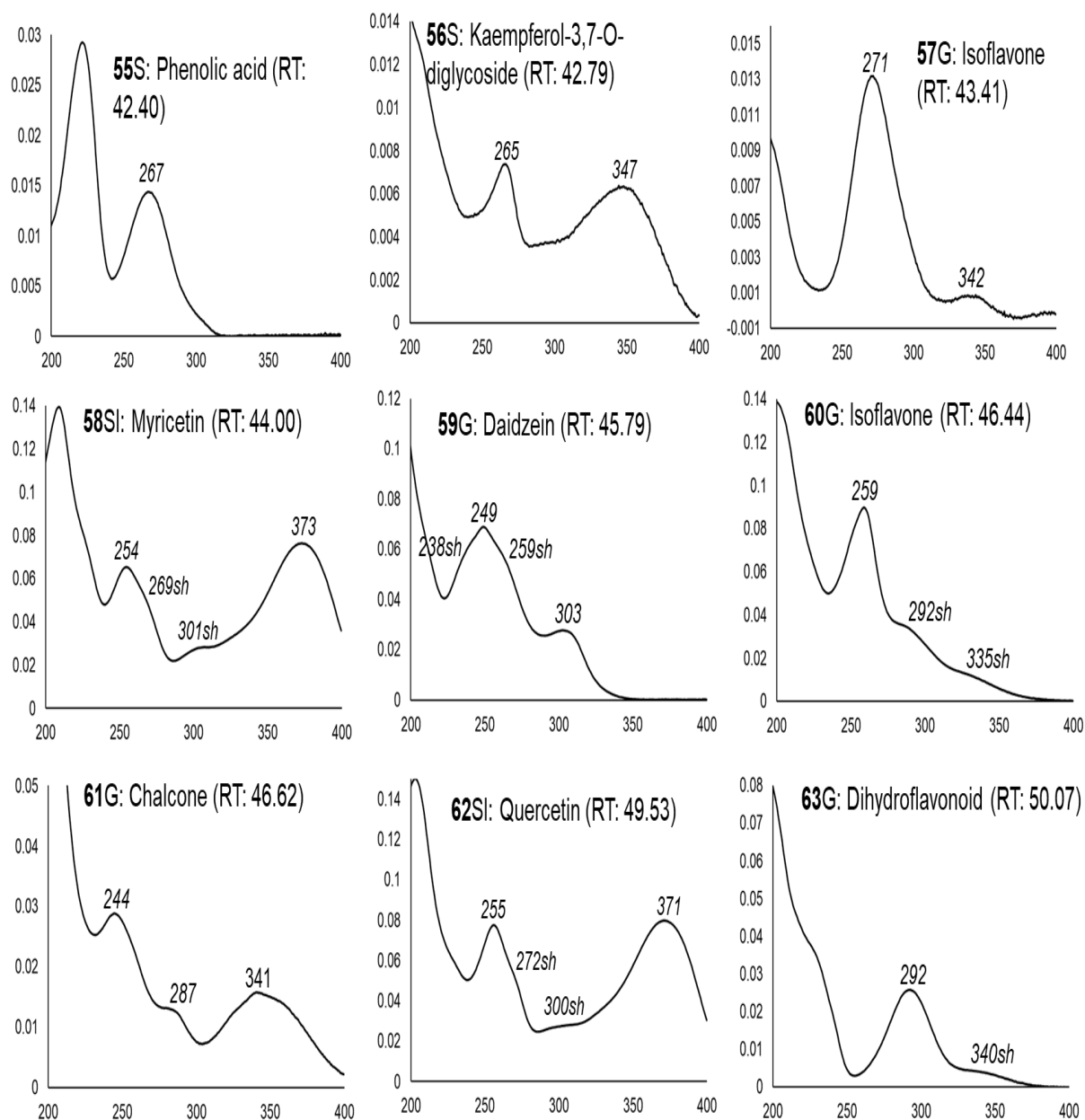


Fig. S1 *cont.* UV spectra of the phenolic compounds found in the seeds, soaked seeds, and sprouts of eight wild forms and eight varieties of common bean (*Phaseolus vulgaris*). S: Accumulated in seeds, I: Accumulated in soaked seeds, G: Accumulated in sprouts.

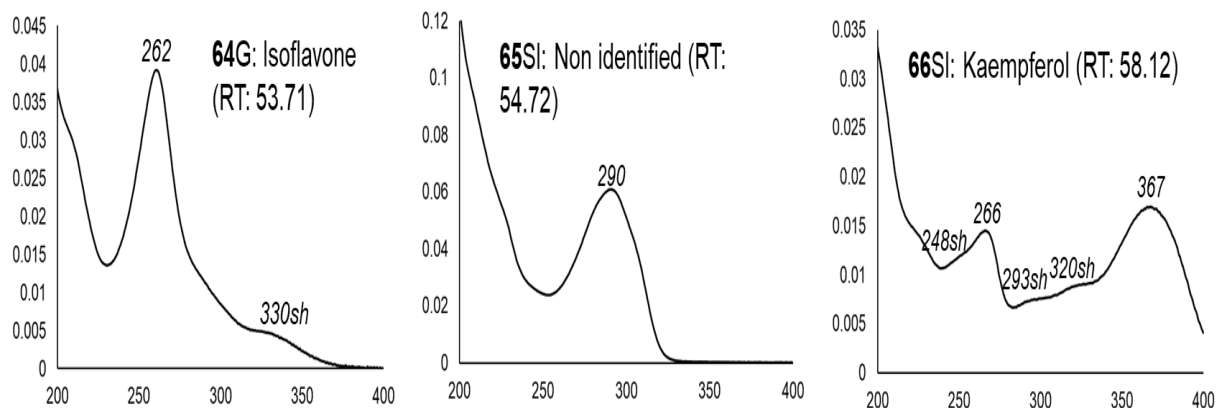


Fig. S1 *cont.* UV spectra of the phenolic compounds found in the seeds, soaked seeds and sprouts of eight wild forms and eight varieties of common bean (*Phaseolus vulgaris*). S: Accumulated in seeds, I: Accumulated in soaked seeds, G: Accumulated in sprouts.