



ISSN: 2348-1900

Plant Science Today

<http://www.plantsciencetoday.online>



Research Communication

Pterobryopsis kegeliana (Müll. Hal.) M. Fleisch. and *P. scabriuscula* (Mitt.) M. Fleisch. - new to the moss flora of the Eastern Ghats

A E D Daniels, P M Biju, V Asha

Bryology Laboratory, Department of Botany and Research Centre, Scott Christian College* (Autonomous), Nagercoil-629 003, India

*Affiliated to Manonmaniam Sundaranar University, Tirunelveli, India

Article history

Received: 15 October 2018
Accepted: 15 November 2018
Published: 26 November 2018

Editor

Dr Afroz Alam
Banasthali Vidyapith
India

Publisher

Horizon e-Publishing Group

*Correspondence

A E Dulip Daniels
✉ dulipdaniels@yahoo.co.uk

Abstract

Pterobryopsis kegeliana (Müll. Hal.) M. Fleisch., so far known from Pachmarhi and the Western Ghats in India, and *P. scabriuscula* (Mitt.) M. Fleisch., known from the Western Ghats, Sri Lanka and Thailand (?), are recorded for the first time in the Eastern Ghats. A perusal of literature revealed that *Meteorium scabriusculum* Mitt., the holotype of *P. scabriuscula*, collected by Law from Concan, presumed to be a place in Thailand by Noguchi refers to only the present-day Konkan region in Peninsular India. Hence, the distribution of *P. scabriuscula* is amended here. Detailed descriptions with figures and photographic plates are provided.

Keywords

Pterobryopsis kegeliana; *P. scabriuscula*; Peninsular India; Eastern Ghats

Citation

Daniels A E D, Biju P M, Asha V. *Pterobryopsis kegeliana* (Müll. Hal.) M. Fleisch. and *P. scabriuscula* (Mitt.) M. Fleisch. - new to the moss flora of the Eastern Ghats. Plant Science Today 2018;5(4):201-205. <https://dx.doi.org/10.14719/pst.2018.5.4.432>

Copyright: © Daniels *et al.* (2018). This is an open-access article distributed under the terms of the Creative Commons Attribution License, which permits unrestricted use, distribution, and reproduction in any medium, provided the original author and source are credited (<https://creativecommons.org/licenses/by/4.0/>).

Indexing: Plant Science Today is covered by Scopus, CAS, AGRIS, CABI, Google Scholar, etc. Full list at <http://www.plantsciencetoday.online>

Introduction

In India, so far, 13 species of *Pterobryopsis* M. Fleisch. have been reported [1,2,3,4]. Of these, *P. auriculata* Dixon is currently *Calyptothecium auriculatum* (Dixon) Nog. [5], *P. nematosa* (Müll. Hal.) Dixon is a synonym of *Calyptothecium wightii* (Mitt.) M. Fleisch. and *P. tumida* (Dicks. ex Hook.) Dixon is a synonym of *Calyptothecium recurvum* (Broth.) Broth. [6]. As a result, only 10 species are so far known from India and all the 10 species occur

in the Western Ghats [1,2,3,4]. However, only 3 species viz., *P. acuminata* (Hook.) M. Fleisch., *P. divergens* (Mitt.) Nog. and *P. orientalis* (Müll. Hal.) M. Fleisch. have so far been reported from the Eastern Ghats [7,8,9]. While studying the bryoflora of the Eastern Ghats, 2 more species namely *P. kegeliana* (Müll. Hal.) M. Fleisch. and *P. scabriuscula* (Mitt.) M. Fleisch. were collected which are incidentally new to the moss flora of the Eastern Ghats. Detailed descriptions with figures and photographic plates are provided. The specimens

are deposited at SCCN. A key is provided to distinguish the species so far known from the Eastern Ghats.

1a. Leaves cucullate ----- 2

b. Leaves faintly cucullate or not ----- 4

2a. Leaves ovate-cochleate, acute at apex; capsules suberect, cylindrical ----- *P. scabriuscula*

b. Leaves ovate to ovate-cordate, acuminate to apiculate at apex; capsules erect, ovoid-cylindric--3

3a. Leaves ovate-cordate, apiculate at apex; costa 2/3 as long as leaves ----- *P. acuminata*

b. Leaves ovate, acuminate at apex; costa 1/2 as long as leaves or shorter ----- *P. orientalis*

4a. Leaves distinctly toothed at margin; alar cells rectangular to subrectangular; capsules erect, cylindrical ----- *P. divergens*

b. Leaves smooth at margin; alar cells quadrate to subquadrate; capsules suberect, ovoid-cylindric ----- *P. kegeliana*

1. *Pterobryopsis kegeliana* (Müll.Hal.) M. Fleisch., Hedwigia 45: 61. 1905; Noguchi, Hattori Bot. Lab. 62: 190. 1987. *Neckera kegeliana* Müll. Hal., Bot. Zeitung (Berlin) 16: 165. 1858. - Type: Neotype (L, *vide* Noguchi *l.c.*). *Pterobryon walkeri* Broth., Rec. Bot. Surv. India 1(12): 324. 1899. *Pterobryopsis walkeri* (Broth.) Broth. in Engl. & Prantl, Nat. Pflanzenfam. 1(3): 803. 1906. (Figs 1 & 2).

Plants pale green. Stems creeping, 4 - 5 cm long, wiry, dark brown, 0.28–0.32 × 0.2–0.22 mm in

cross section, ovate, without a central strand; cortex 3- or 4-layered; cells 4–10 × 2–4 mm, thick-walled; medullary cells 16–28 × 12–20 mm, thin-walled; branches ascending, 1.5–3 cm, pinnate. Leaves dense, squarrose, ovate, decurrent, faintly cucullate or not, slightly incurved at margin above, entire, acute; stem leaves 1.8–2.1 × 1.6–1.8 mm; branch leaves 1.1–1.8 × 0.5–0.9 mm; cells incrassate, elongate-rhomboid, with walls distinctly porose, faint at middle; apical cells 28–52 × 8–12 μm; median cells 32–62 × 8–10 μm; basal cells 28–50 × 12–16 μm; alar cells 8–24 × 8–20 μm, quadrate to subquadrate, red-brown; costa single, almost 2/3 as long as leaf, sometimes with an additional shorter one at base. Sporophyte not seen.

Habitat: Corticolous, in degraded evergreen forests, ca 1240 m.

Distribution: India: Madhya Pradesh (Pachmarhi), Western Ghats of Karnataka and Maharashtra [9], and Eastern Ghats of Tamil Nadu (Kolli Hills).

Specimens examined: Eastern Ghats: Tamil Nadu, Namakkal Dist., Kolli Hills, Perumakka Shola, ca 1240 m, 21.1.2016, P.M. Biju 1501 (SCCN).

2. *Pterobryopsis scabriuscula* (Mitt.) M. Fleisch., Hedwigia 45: 61. 1905; Noguchi, Hattori Bot. Lab. 60: 152. 1986. *Meteorium scabriusculum* Mitt., J. Proc. Linn. Soc., Bot. 1(Suppl.): 85. 1859. - Type: Concan, Law 919 (NY). *Meteorium frondosum* Mitt., J. Proc. Linn. Soc., Bot. 1(Suppl.): 86. 1859. *Endotrichum frondosum* (Mitt.) A. Jaeger, Ber. Senckenberg Naturf. Ges.: 233. 1876. *Garovaglia*

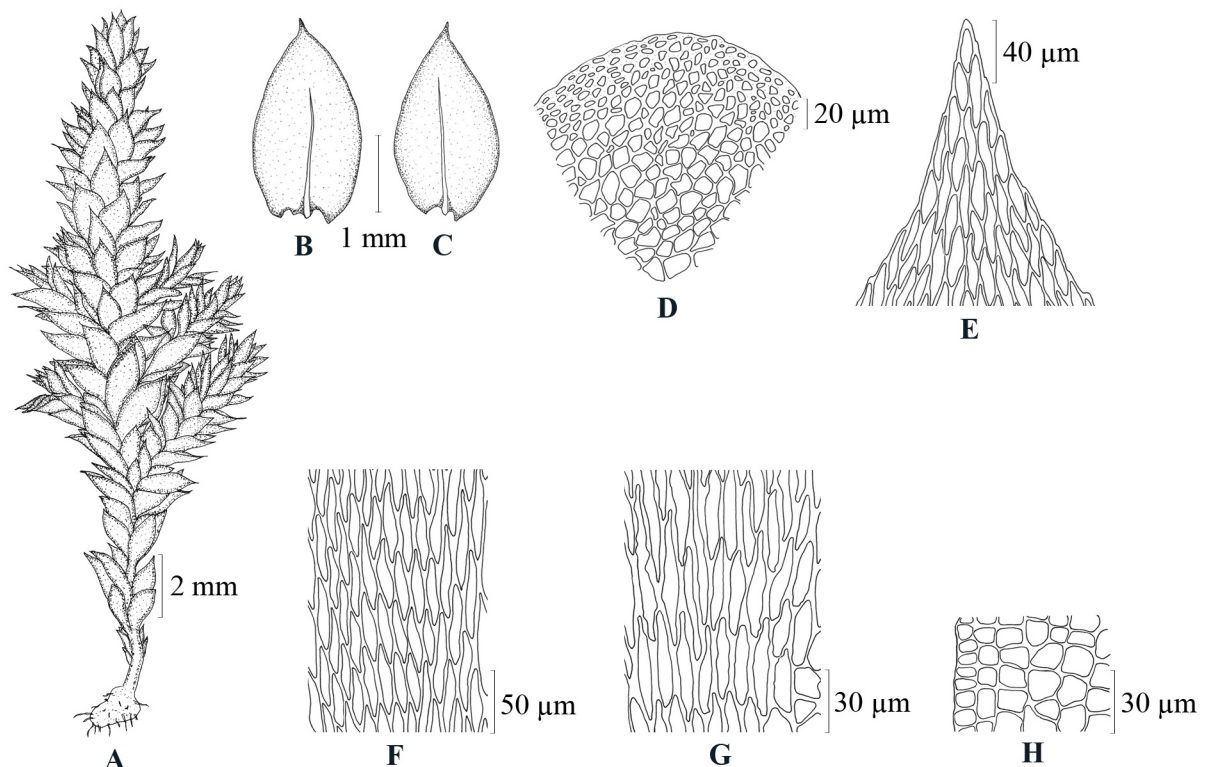


Fig 1. *Pterobryopsis kegeliana* (Müll. Hal.) M. Fleisch.

A. Plant B. Stem leaf C. Branch leaf D. Cross section of stem E. Leaf apical cells
F. Leaf median cells G. Leaf basal cells H. Leaf alar cells (P. M. Biju 1501)

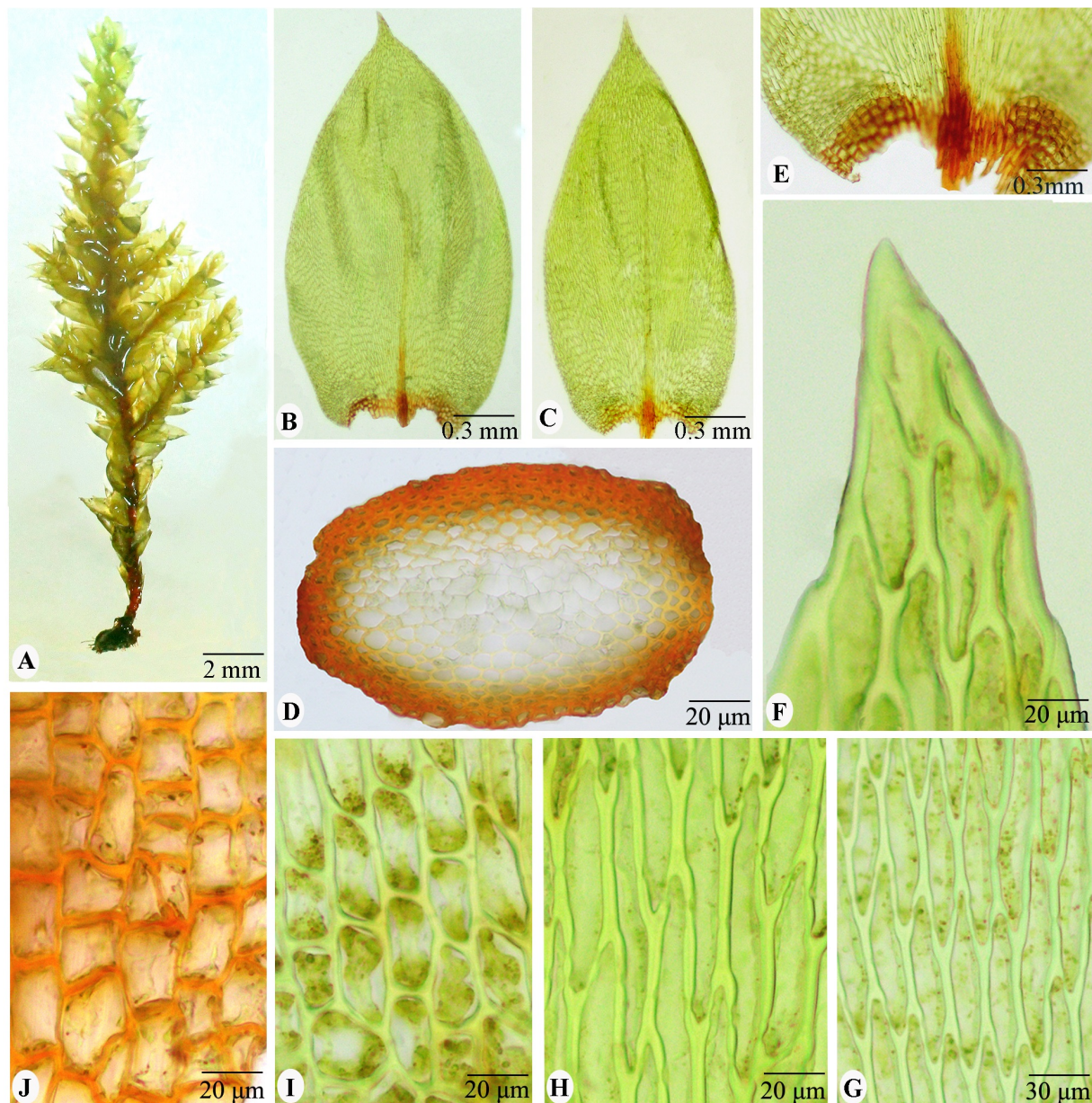


Fig 2. *Pterobryopsis kegeliana* (Müll. Hal.) M. Fleisch.

A. Plant B. Stem leaf C. Branch leaf D. Cross section of stem E. Leaf base showing alar region F. Leaf apical cells G. Leaf median cells H. Leaf midbasal cells I. Leaf basal cells J. Leaf alar cells (P. M. Biju 1501)

frondosa (Mitt.) Paris, Index Bryol.: 508. 1896. *Pterobryopsis frondosa* (Mitt.) M. Fleisch., Hedwigia 45: 60. 1905; Gangulee, Moss. E. India 2(5): 1268. 1976. (Figs. 3 & 4).

Plants pale green. Stems creeping, 4–6 cm long, wiry, dark brown, $0.26\text{--}0.30 \times 0.18\text{--}0.20$ mm in cross section, ovate, without a central strand; cortex 2- or 3-layered; cells $2\text{--}24 \times 2\text{--}16$ mm, thick-walled; medullary cells $8\text{--}28 \times 4\text{--}20$ mm, thin-walled; branches ascending, 1.2–1.8 cm, irregularly pinnate. Leaves dense, squarrose, ovate-cochleate, concave, cucullate, decurrent, incurved at margin above, entire, acute; stem leaves $2.0\text{--}3.5 \times 1.0\text{--}1.3$ mm; branch leaves $1.0\text{--}1.1 \times 0.3\text{--}0.6$ mm; cells incrassate, narrow, vermicular, elongate, with walls distinctly porose; apical cells $16\text{--}48 \times 4\text{--}8$ μm ; median cells $40\text{--}96 \times 8\text{--}12$ μm , linear-vermicular; basal cells $8\text{--}32 \times 8\text{--}24$ μm ; alar cells $20\text{--}32 \times 18\text{--}28$ μm , quadrate to subquadrate,

red-brown; costa single, almost 2/3 as long as leaf. Sporophyte not seen.

Habitat: Corticolous, in degraded evergreen forests, ca 1400 m.

Distribution: Sri Lanka and India: Western Ghats of Tamil Nadu (Nilgiri Hills and Palani Hills) [4,9] and Eastern Ghats of Tamil Nadu (Sherveroy Hills).

Specimens examined: Eastern Ghats: Tamil Nadu, Salem Dist., Sherveroy Hills, Yercaud, ca 1400 m, 10.8.2015, A.E.D. Daniels & P.M. Biju 962 (SCCN).

Discussion

Noguchi [10], under the distribution of *Pterobryopsis scabriuscula* included Thailand (?) based on the collection of the holotype of *Meteorium scabriusculum* Mitt. (NY), by Law (919), from Concan, a place which he assumed to

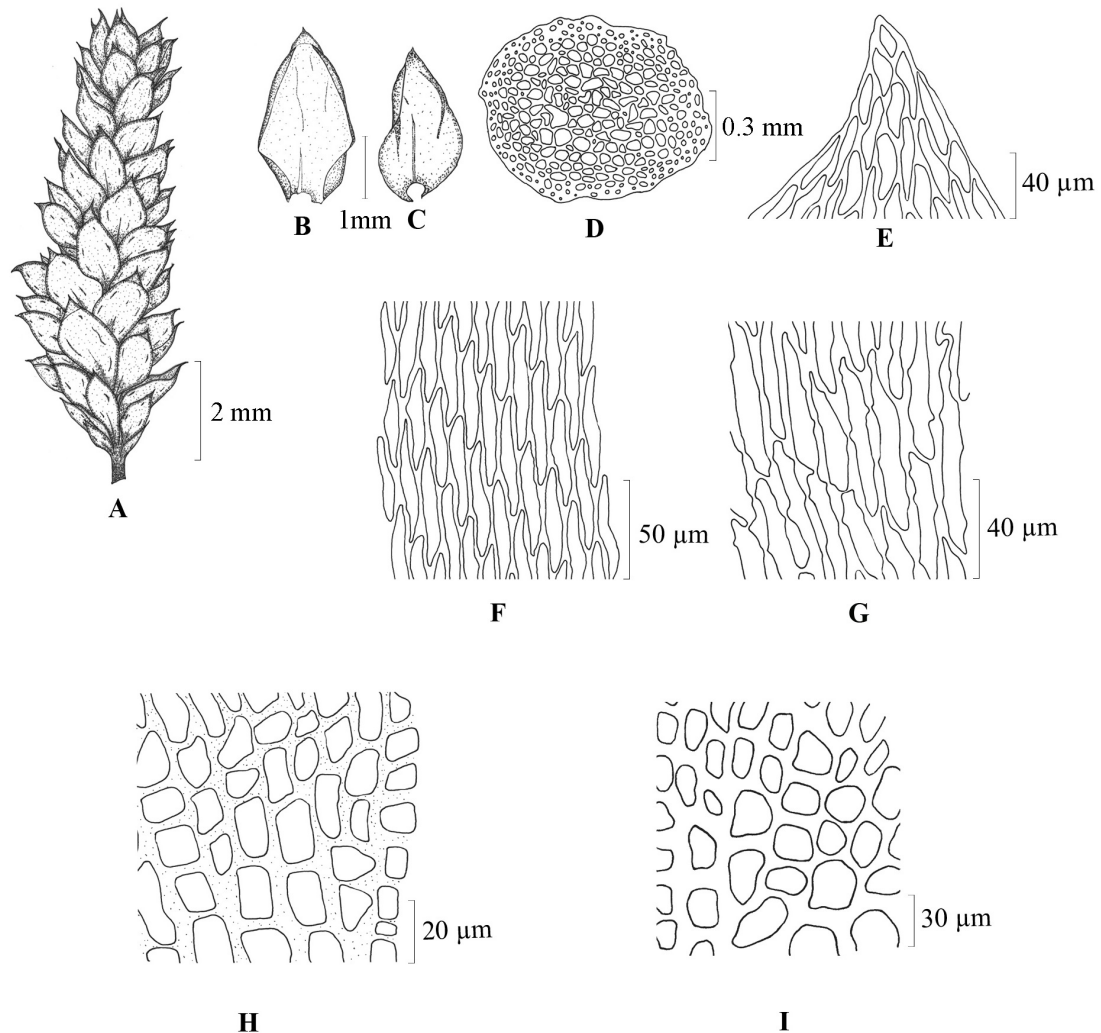


Fig 3. *Pterobryopsis scabriuscula* (Mitt.) M. Fleisch.

A. Plant **B.** Stem leaf **C.** Branch leaf **D.** Cross section of stem **E.** Leaf apical cells **F.** Leaf median cells **G.** Leaf midbasal cells **H.** Leaf basal cells **I.** Leaf alar cells (A.E.D. Daniels & P.M. Biju 962)

be in Thailand. However, a perusal of the specimens examined provided under *P. scabriuscula* indicates that all the samples cited had been collected in and around the Western Ghats of Maharashtra and Sri Lanka (Ceylon) only. Similarly, in his subsequent publication [11] where *P. kegeliana* is included, again under specimens examined, all the samples had been collected in and around the Western Ghats of Maharashtra and Karnataka, and Pachmarhi (erroneously spelt as 'Pachmashi') in Madhya Pradesh. Saradesāya [12], on page 2 states that, Concan is the narrow strip of land that runs from the sea to the Ghats. From this, it is obvious that Concan refers to the present-day Konkan (Konkan Coast) region in India, the narrow strip of land along the western coasts of Maharashtra, Goa and Karnataka bounded by the Western Ghats in the east, the Arabian Sea in the west, the Mayura River in the north and the Gangavalli River in the south and not a place in Thailand as presumed by Noguchi. Hence, *P. scabriuscula* is currently known only from Peninsular India and Sri Lanka, and Thailand is hereby excluded from its range of distribution.

Authors' contribution

AEDD - Collection, determination and preparation of the MS; PMB - Collection, dissection and help in determination; VA - Dissection and preparation of figures and photographic plates.

Acknowledgements

The authors thank the Tamil Nadu State Forest Department for permission to explore the study area and help in the field, the Ministry of Environment, Forests & Climate Change, Govt. of India, New Delhi, for financial assistance, S. He (MO), for help with literature and determination of the species and the Principal, Scott Christian College, for facilities.

Conflict of interest

The authors declare that they have no competing interests.

References

1. Lal J. A checklist of Indian mosses. Dehra Dun: Bishen Singh Mahendra Pal Singh; 2005. P. 1-164.

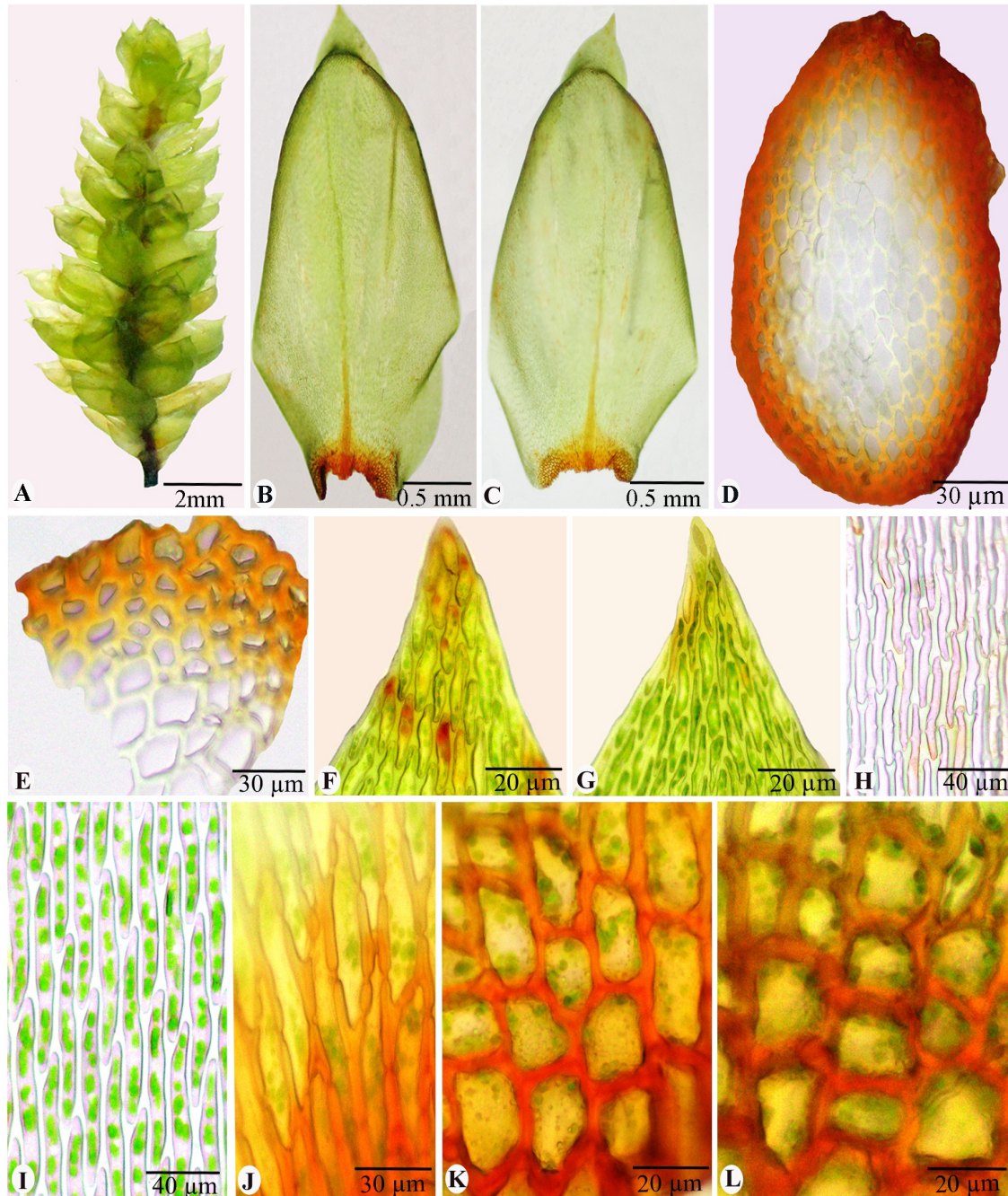


Fig 4. *Pterobryopsis scabriuscula* (Mitt.) M. Fleisch.

A. Plant **B.** Stem leaf **C.** Branch leaf **D–E.** Cross section of stem **F–G.** Leaf apical cells
H–I. Leaf median cells **J.** Leaf midbasal cells **K–L.** Alar cells (A.E.D. Daniels & P.M. Biju 962)

2. Dandotiya D, Govindaparyari H, Suman S, Uniyal PL. Checklist of the bryophytes of India. Arch. Bryol. 2011; 88: 1–126.
3. Schwarz U. An updated checklist of bryophytes of Karnataka. Arch. Bryol. 2013; 181: 1–42.
4. Gangulee HC. Mosses of Eastern India and adjacent regions. 2 (Fasc. 4–6). Calcutta: The Author; 1974–1977. P. 831–1546.
5. Noguchi A. Notulae bryologicae, X. J. Hattori Bot. Lab. 1980; 47: 311–317.
6. Daniels AED, Sreebha R, Kariyappa KC. Bryoflora of Indira Gandhi National Park in Anamalai Hills, India. Dehra Dun: Bishen Singh Mahendra Pal Singh; 2018. P. 1–513.
7. Kumar GV, Krishnamurthy KV. Moss flora of Shervaroy Hills of Eastern Ghats (South India). In: Nath V, Asthana AK, Editors. Current Trends in Bryology. Dehra Dun: Bishen Singh Mahendra Pal Singh; 2007. p. 227–243.
8. Palani R, Sathish SS, Thamizharasi T, Vijayakanth P. Checklist of Mosses (Bryophyta) of Bodamalai Hills in Eastern Ghats, Tamil Nadu. Pl. Sci. Today 2017; 4: 49–54. <https://doi.org/10.14719/pst.2017.4.1.278>
9. Sathish SS, Thamizharasi T, Palani R, Vijayakanth P, Vimala A. Checklist of mosses (Bryopsida) of the Kalrayan Hills in the Eastern Ghats of Tamil Nadu, India. Eng. Biosci. 2014; 2: 28–33.
10. Noguchi A. Notulae bryologicae, XII. J. Hattori Bot. Lab. 1986; 60: 149–158.
11. Noguchi A. Notulae bryologicae, XIV. J. Hattori Bot. Lab. 1987; 62: 183–190.
12. Saradesāya M. The Land, the People and the Language. A History of Konkani Literature: From 1500 to 1992. Sahitya Akademi; 2000. P. 1–317.

