

Field view of the experiment



Characterization of different traits in sunflower germplasm

1. Hypocotyle pigmentation



Absent

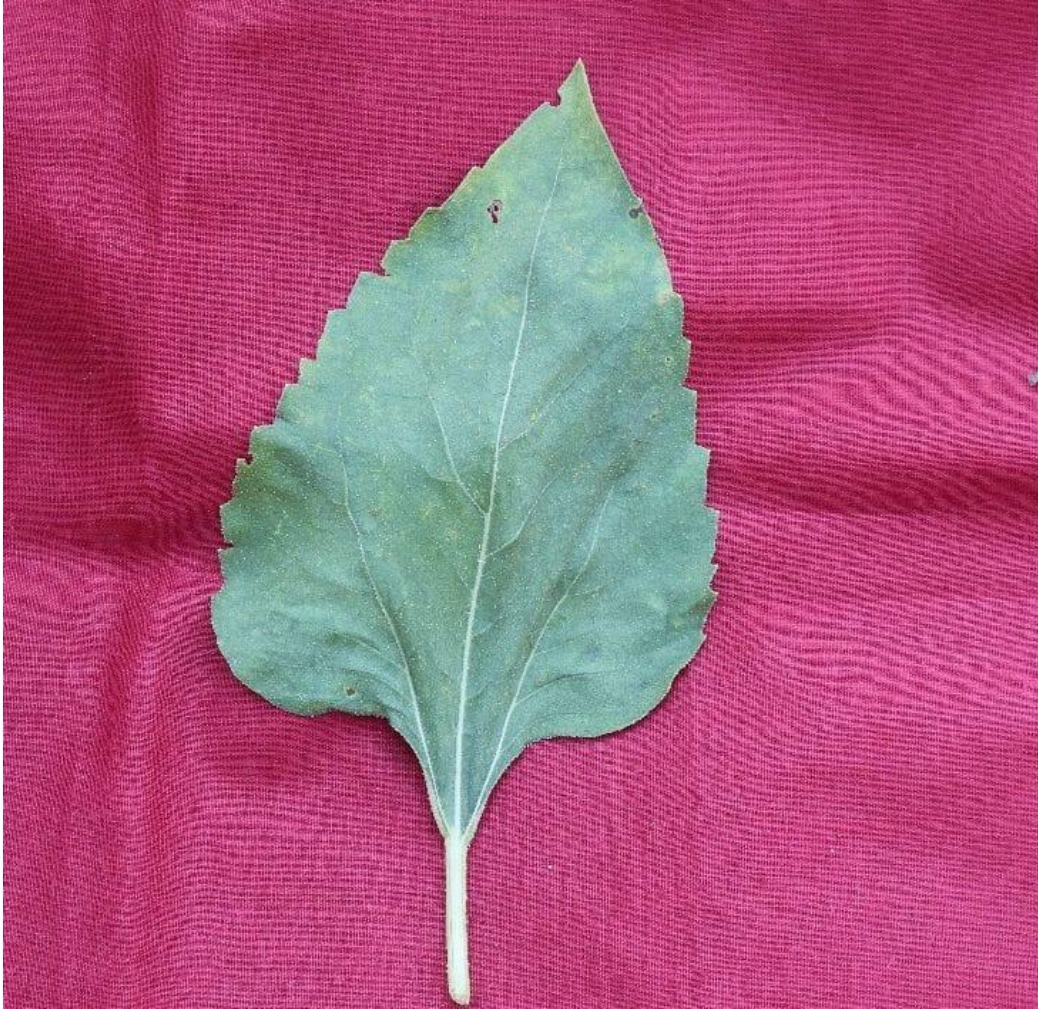


Medium



Strong

2. Leaf shape



Lanceolate



Cordate

3. Leaf serration



Fine



Medium



Coarse

4. Leaf angle of lateral veins



Acute



Obtuse

5. Ray floret color



Yellow



Yellow

6. Disk floret color



Yellow

8. Plant branching



Absent



Present

9. Plant type of branching



Overall



Apical

10. Leaf Petiole Pigmentation



Present



Absent

11. Stem Pigmentation



Present



Absent

12. Ray floret: Shape



Ovate



Elongated

13.Head Size



Small



Medium